

Report by the Commission on Poverty (CoP) and its Task Forces

Chief Secretary for Administration and Chairperson of the CoP – Mr Matthew Cheung Kin-chung

Chairperson of:

Community Care Fund Task Force – Dr Law Chi-kwong

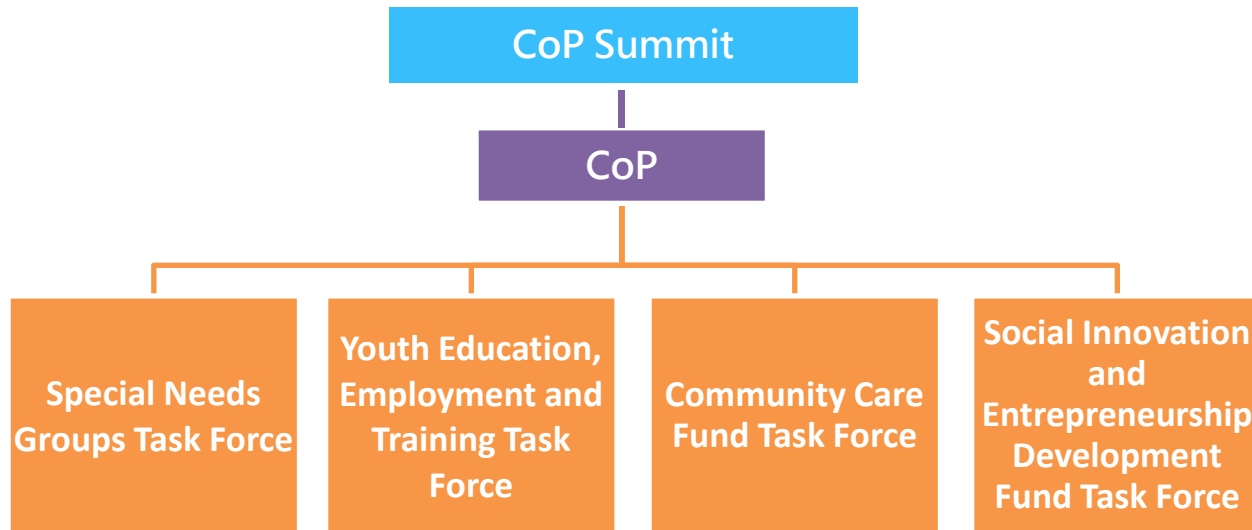
Social Innovation and Entrepreneurship Development Fund Task Force – Prof Stephen Cheung Yan-leung

Special Needs Groups Task Force – Mr Chua Hoi-wai

Youth Education, Employment and Training Task Force – Dr Clement Chen Cheng-jen

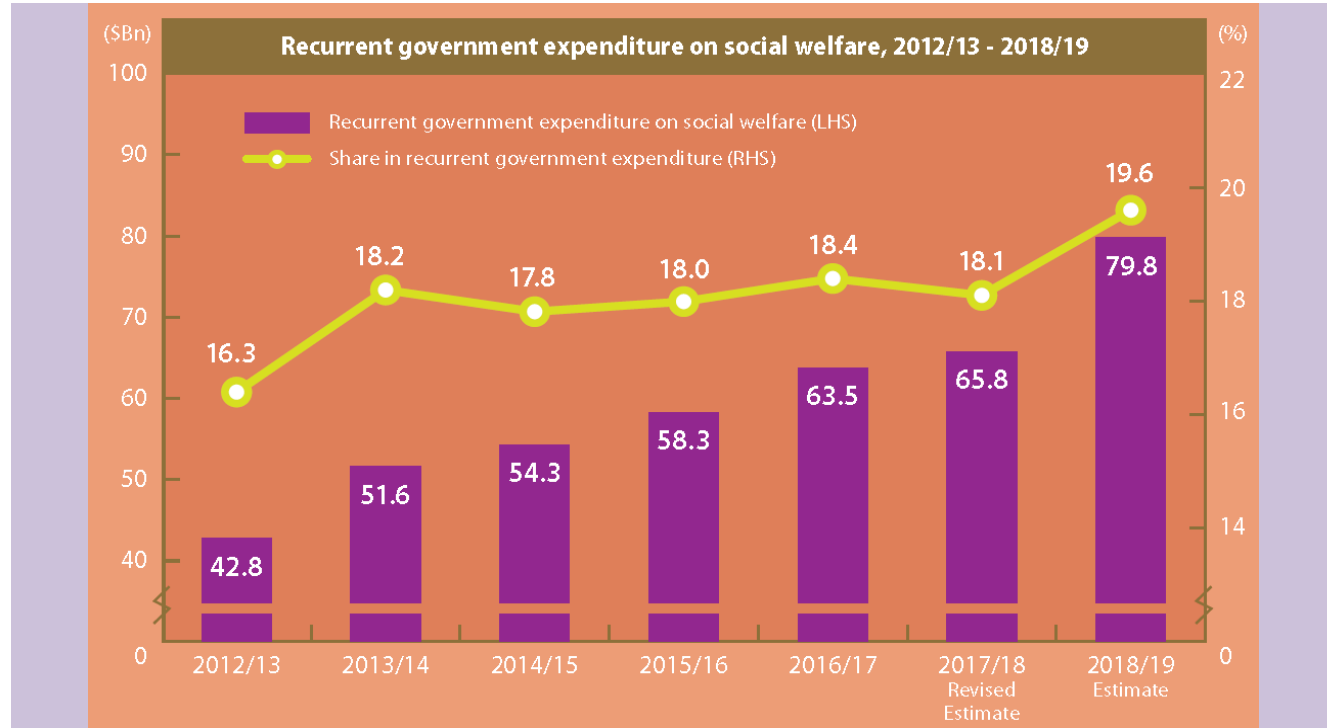
The Government and the CoP have been working closely in formulating and implementing policies on poverty alleviation and support for the disadvantaged

- Through its Task Forces, the CoP has fully deliberated specific issues and has facilitated the implementation of policies and initiatives on poverty alleviation and support for the disadvantaged, benefiting different groups in need



Continuous increase in government resources for poverty alleviation

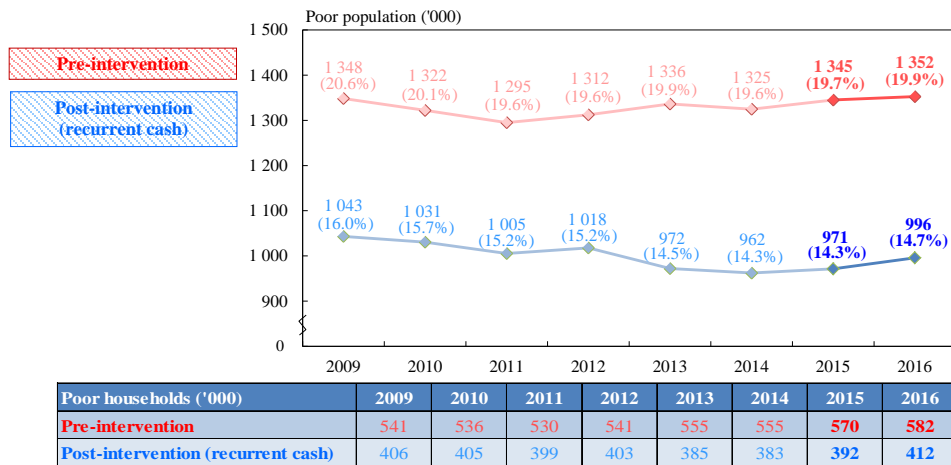
- Recurrent government expenditure on social welfare in 2018/19 is estimated to reach **\$79.8 billion**, representing a significant **increase of 86%** over that in 2012/13



Monitoring the poverty situation through the poverty line analysis on an ongoing basis

- Monitored the poverty situation, formulated poverty alleviation policies and reviewed policy effectiveness through the poverty line analysis
- The poverty situation in recent years remained largely stable. The policy interventions of the Government were effective in helping those in need
- The overall poverty figures recorded a slight increase in 2016, mainly due to population ageing and structural changes in demographics

Poor population and poverty rate after recurrent cash benefits, 2009-2016



Note: () Figures in parentheses denote the corresponding poverty rates.
Source: General Household Survey, Census and Statistics Department.

2016

- Recurrent cash benefits lifted **360 000 persons** out of poverty
- Reduced the poverty rate by **5.2 percentage points**

The current-term Government's principles in improving people's livelihood, alleviating poverty and supporting the disadvantaged

- The Chief Executive put forward four principles in her Policy Address:



pro-child



pro-family



pro-work



pro-user

- When formulating its first Policy Address and Budget, the current-term Government adopted an innovative mindset, putting forth various measures to improve people's livelihood and share the fruits of economic development with citizens of different strata and backgrounds
- In the recently announced Estimates for 2018-19, the recurrent expenditures on **education**, **social welfare** and **health care** amount to over **\$230 billion**, which accounts for close to 60 per cent of the total recurrent expenditure, benefiting various groups in need
- In addition to cash assistances, services dedicated for various groups in need have also been enhanced in a comprehensive manner

The Budget has enhanced support for different families (Example 1)

4-person grassroots family (with family assets of \$450,000; currently receiving Low-income Working Family Allowance (LIFA))



Father (full-time worker)
200 hours of work per month
Monthly salary: \$17,000



Mother (homemaker)



Daughter (P.5 student)
School Textbook Assistance
(Full Grant)



Son (S.5 student)
School Textbook Assistance
(Full Grant)

Benefiting from

Existing amount of allowances granted: over \$50,000 per year

Cash
allowance

- ✓ Extra two months of LIFA payment : **\$6,400**
- ✓ One-off grant to students in need: **\$4,000**

↑ Total
\$10,400

Public
services

- ✓ Additional recurrent expenditure of \$2 billion to achieve quality education
- ✓ Implementing “one school social worker for each school” in primary schools
- ✓ Setting up a new Student Activities Support Fund

The Budget has enhanced support for different families (Example 2)

Grassroots elderly couple

(above 75 years old; with assets of \$200,000;
currently receiving Normal Old Age Living Allowance (OALA))

✓ Existing allowance of Normal OALA granted: over \$60,000 per year

Benefiting from

- ✓ Eligible to the Higher OALA which will be implemented in this June (in total \$6,970 per month). As the Higher OALA will take retrospective effect from 1 May last year, the elderly couple will be granted **\$31,450** in one go
- ✓ Extra two months of Higher OALA: **\$13,940**

↑ Total
\$45,390



Cash
allowance

Public
services

Enhancing community and home care services \$2 transport fare concession scheme
Community Care Fund (CCF) programmes for the elderly Waiver for standard fees and charges for public healthcare services
Promoting the application of gerontechnology Enhancing residential care service for the elderly
A one-off additional \$1,000 worth of elderly health care vouchers

Low-income Working Family Allowance Scheme

- Monitored the implementation of the LIFA Scheme
- So far, about \$1.23 billion has been approved under the LIFA Scheme, benefiting over 39 000 households with more than 143 000 persons
- Advised on the improvement measures on the LIFA Scheme as stated in the Policy Address; the enhanced LIFA Scheme (to be renamed as the “Working Family Allowance” Scheme) will be implemented on 1 April 2018



在職家庭及學生資助事務處
Working Family and Student
Financial Assistance Agency

申請編號：(由本處填寫)

「低收入在職家庭津貼計劃」申請表格

填寫表格前，請詳閱《低收入在職家庭津貼計劃申請須知》(簡稱《申請須知》)，並按照《申請須知》第10章提交所需的證明文件副本。**曾成功獲批津貼的申請家庭，如相關資料不變，日後申請時不需再次提交部分證明文件**，詳情請參看「提交申請文件清單」(簡稱「申請清單」) (LIFA200A)。首次申請家庭則請按照「申請清單」預備所有申請需提交的證明文件。

請用不能擦掉的黑色或深藍色原子筆，以正楷填寫。如有錯誤，可用筆刪改並在旁覆蓋作實，切勿使用塗改液或塗改帶。請保留副本作參考之用。

第一部分 申請家庭的基本資料

Q.1 申請津貼時段(必須為期過去的6個月)^a：
20__年__月__日至20__年__月__日

Q.2 在申請津貼時段最後一個月，同住家庭成員^b (包括申請人)共有多少人(申請月份家庭人數須最少為2人)?
____人
[請於第二部分提供各成員的個人資料]

Q.3 在申請津貼時段內，如居住的家庭成員人數有增加或減少(於申請津貼時家庭暫時寄居者除外)，請列出有關月份及詳情：
申請月份 | 詳情
____ | ____
____ | ____
____ | ____
____ | ____
[請於第二部分提供上述各成員的個人資料]

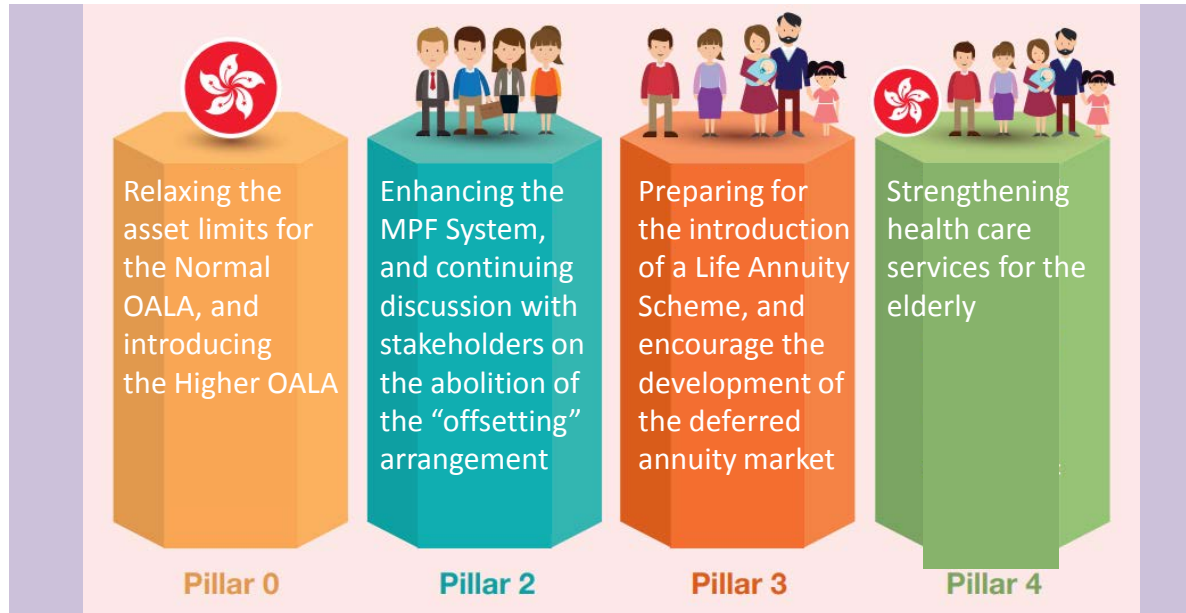
Q.4 居住地址：
☐ 香港 ☐ 九龍 ☐ 新界
地區：____
街道名稱及樓數：____
屋邨/村：____
大廈：____
座：____ 樓：____ 室：____

Q.5 通訊地址(如與居住地址不同)：

Q.6 聯絡電話號碼：
____ (本地流動電話)
____ (本處將以電話通知發出申請傳單通知書)
____ (家務/其他家庭成員電話)

Retirement protection

- Continued to monitor the poverty situation of the elderly through the poverty line analysis
- Having regard to the views collected from the public engagement exercise, the Government is enhancing the multi-pillar retirement protection system progressively
- The Government has set aside \$15 billion for the abolition of the Mandatory Provident Fund (MPF) "offsetting" arrangement
- The Hong Kong Mortgage Corporation Limited will launch a Life Annuity Scheme in the middle of this year



Facilitating the integration of ethnic minorities into the community

- ✓ The Chief Secretary for Administration (CS) will set up a steering committee to enhance collaboration within the Government on support for ethnic minorities
- ✓ The Government has set aside \$500 million to strengthen support for ethnic minorities

- Continued to monitor the poverty situation of ethnic minorities
- Advised on measures including integration support for ethnic minorities, education, employment, training and support for facilitating the use of public services by ethnic minorities
- Conducted a thematic study to understand the use of public services by ethnic minorities
- Continued to monitor the progress and effectiveness of the implementation of the Chinese Language Curriculum Second Language Learning Framework and Applied Learning Chinese (for non-Chinese speaking students) in primary and secondary schools



Non-Chinese speaking students participating in celebration of the Mid-Autumn Festival at their school

Facilitating the employment of persons with disabilities

- Advised on the Government's measures to assist and facilitate persons with disabilities to apply for government jobs, including the expansion the Internship Scheme for Students with Disabilities
- Supported the initiatives to enhance vocational rehabilitation support for persons with disabilities and strengthen the support for encouraging employers to offer more diverse employment opportunities for them



A student with visual impairment participating in the Internship Scheme for Students with Disabilities, and her mentor



Facilitating the employment of persons with disabilities, providing more employment opportunities for them

Taking care of the needs of children

- ✓ The Commission on Children, to be chaired by CS, will formulate plans and measures to create an environment that can most optimally cater to the needs of children in light of the various needs of children of different stages of growth and family backgrounds etc.

Children with special educational needs (SEN)

- Advised on the regularisation of the Pilot Scheme on On-site Pre-school Rehabilitation Services
- Followed up on the implementation of a CCF pilot project which provides ordinary schools with funding to engage Special Educational Needs Coordinators
- Explored ways to strengthen the support for non-Chinese speaking students with SEN and their parents

Strengthening child care and after-school care services

- Kept track of the thematic study on the long-term development of child care services
- Supported the provision of additional fee-waiving and fee-reduction places for after-school care services through the CCF



Regularising the Pilot Scheme on On-site Pre-school Rehabilitation Services



Providing additional fee-waiving and fee-reduction places for after-school care services through the CCF

Promoting youth upward mobility

- ✓ The Government has set aside \$1 billion to support the work of Youth Development Commission to be chaired by CS, with a view to giving young people more room to unleash their potential and more opportunities for upward mobility
- Advised on the priority measures to support quality education put forward by the Chief Executive
- Continued to implement the “Life Buddies” Mentoring Scheme and the “Future Stars” Programme



Supporting patients with financial needs

- Provided subsidies for eligible patients to purchase ultra-expensive drugs (including those for treating uncommon disorders) through the CCF
 - Extended the First Phase Programme of the CCF Medical Assistance Programmes with the drug list updated and the financial assessment criteria relaxed
- ✓ The Government has set aside \$500 for the Hospital Authority's improvement measures for the patient's co-payment mechanism under the CCF's programme



Providing subsidies for eligible patients to purchase ultra-expensive drugs through the CCF

Community Care Fund

- Approved 9 new assistance programmes in the past year, including the Pilot Scheme on Relocation Allowance for Beneficiaries of the "Community Housing Movement"
- Explored the feasibility of the provision of subsidy to needy primary and secondary students for purchasing mobile computer devices to facilitate the practice of e-learning
- Planned to incorporate the Dementia Community Support Scheme into the regular assistance programme after the pilot period

Since the establishment of the CCF in 2011:

- 45 assistance programmes have been approved
- a total commitment of over \$8 billion has been made
- around 1.58 million cases have benefited
- 12 assistance programmes have been incorporated into the Government's regular assistance programmes



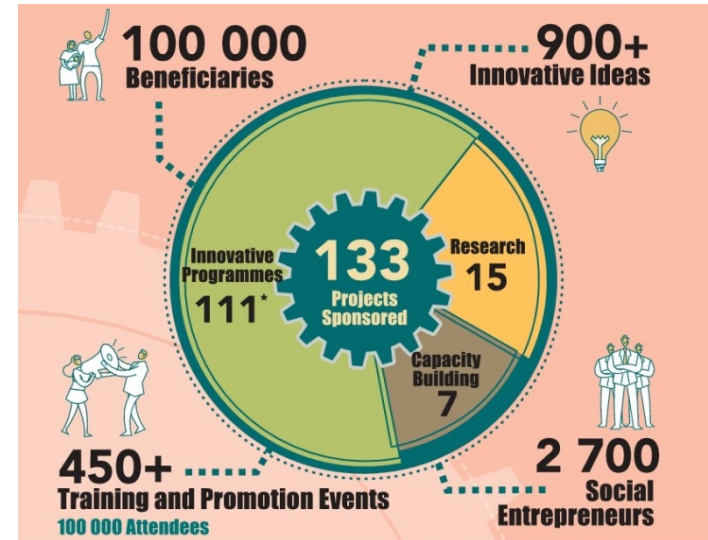
Incorporating the Dementia Community Support Scheme into the regular assistance programme after the pilot period

Social Innovation and Entrepreneurship Development Fund (SIE Fund)

- Since the establishment of the SIE Fund in 2013, it has been facilitating social innovation in three priority areas, namely innovative programmes, capacity building and research, with a view to alleviating and preventing poverty and preventing social exclusion
- Over \$120 million has been allocated for implementing relevant initiatives since its establishment



The Chief Executive officiating at the Announcement Ceremony of Innovative Ventures organised by the SIE Fund on November 2017



The way forward

- Build on past experience and map out the framework and work directions for the next term of the CoP
- Explore and implement more initiatives on poverty alleviation and support for the disadvantaged in collaboration with relevant policy platforms according to the four principles put forward by the Chief Executive, i.e. pro-child, pro-family, pro-work and pro-user
- Promote more cross-sector and cross-profession collaboration to tackle poverty issues
- Enhance the analytical framework of the poverty line, and continue monitoring the poverty situation and the effectiveness of poverty alleviation policies