



Community Care Fund

Commission on Poverty
October 2014

Index

Community Care Fund: Introduction	1
Community Care Fund Task Force: Membership	3
Community Care Fund Task Force: Terms of Reference	4
Community Care Fund Assistance Programmes - Introduction	5
Progress of Regularisation of the Assistance Programmes	
(1) Subsidy for patients who marginally fall outside the Samaritan Fund (SF) safety net for the use of SF subsidised drugs	8
(2) Financial assistance for non-school-attending ethnic minorities and new arrivals from the Mainland for taking language examinations	9
(3) Subsidy for non-school-attending ethnic minorities and new arrivals from the Mainland participating in language courses	10
(4) Subsidy for Comprehensive Social Security Assistance recipients who are owners of Tenants Purchase Scheme flats	11
(5) Subsidy to meet lunch expenses at schools	12
(6) Enhancement of the flat rate grant under the School Textbook Assistance Scheme	13
(7) Enhancement of the financial assistance for needy students pursuing programmes below sub-degree level	14
(8) Training subsidy for children who are on the waiting list for subvented pre-school rehabilitation services	15
(9) Special subsidy to persons with severe physical disabilities for renting respiratory support medical equipment	16
(10) Special subsidy to persons with severe physical disabilities for purchasing medical consumables related to respiratory support medical equipment	17

Assistance Programmes Completed/ In Progress

(1)	Subsidy for patients for specified self-financed cancer drugs which have not yet been brought into the Samaritan Fund	19
(2)	Elderly dental assistance programme	20
(3)	School-based fund (cross-boundary learning activities)	21
(4)	After-school care pilot scheme	22
(5)	Extra travel subsidy for needy special school students	23
(6)	Subsidy for Comprehensive Social Security Assistance recipients living in rented private housing	24
(7)	Relocation allowance for eligible residents of sub-divided units in industrial buildings who have to move out as a result of the Buildings Department's enforcement action	25
(8)	Subsidy for low-income elderly tenants in private housing	26
(9)	Subsidy for low-income persons who are inadequately housed	27
(10)	One-off living subsidy for low-income households not living in public housing and not receiving CSSA	28
(11)	Special care subsidy for the severely disabled	29
(12)	Subsidy for elders who are on the waiting list of Integrated Home Care Services (Ordinary Cases) for household cleaning and escorting services for medical consultations	30
(13)	Incentive scheme to further encourage CSSA recipients of the Integrated Employment Assistance Programme for Self-reliance to secure employment	31
(14)	Pilot scheme on living allowance for carers of the elderly persons from low income families	32
(15)	Subsidy for owners' corporations of old buildings	33

Assistance Programmes to be Rolled Out Soon

(1)	Providing hostel subsidy for needy undergraduate students	34
(2)	Increasing the academic expenses grant under the Financial Assistance Scheme for Post-secondary Students	34

Way Forward

35

Community Care Fund: Introduction

The Community Care Fund (CCF) is a trust fund established in early 2011 under the Secretary for Home Affairs Incorporation Ordinance (Cap. 1044) with the Secretary for Home Affairs Incorporated as its trustee. Its main objective is to provide assistance to people facing economic difficulties, in particular those who fall outside the social safety net or those within the safety net but have special circumstances that are not covered. In addition, the CCF may implement measures on a pilot basis to help the Government identify those that can be considered for incorporation into the Government's regular assistance and service programmes.

In late 2010, the then Chief Executive appointed the Steering Committee on the CCF as chaired by the Chief Secretary for Administration to oversee and co-ordinate the work of the CCF. An Executive Committee and four Sub-committees (Education, Home Affairs, Medical and Welfare) were set up under the Steering Committee to support the operation of the CCF.

The terms of the above-mentioned committees/sub-committees ended in end 2012 and the CCF has since 2013 been integrated into the work of the reinstated Commission on Poverty (CoP). The CCF Task Force, set up under the CoP as chaired by the Chief Secretary for Administration, is responsible for advising the CoP on the CCF's various arrangements (including investment, finance and administrative operations), as well as the formulation of assistance programmes, the co-ordination and overseeing of the implementation of assistance programmes and the reviewing of their effectiveness. The CCF Task Force will also liaise closely with other CoP task forces and provide mutual support, so as to draw up programmes to provide assistance to the underprivileged.

The operation of the CCF is guided by the following principles:

- (1) building a caring culture in society by gathering the efforts of various sectors of the community and encouraging the better-off to contribute;
- (2) programmes should be people-oriented with assistance directly provided to beneficiaries; administrative costs or involvement of implementing agencies should be minimised though the need for non-governmental organisations' help to reach out to target groups outside the existing service network will not be precluded; programmes should be multifarious in nature; and the vetting process should be streamlined to ensure cost-effectiveness;
- (3) programmes should complement the assistance and services provided by the Government or other charitable funds; duplication of efforts should be avoided as far as practicable; and
- (4) operation of the CCF will mainly be funded by investment returns on the seed capital, but the seed capital may be deployed in accordance with the principle of financial prudence in response to needs.

The target beneficiaries of the CCF are those facing economic difficulties and in need of assistance.

The Government has injected \$5 billion and \$15 billion into the CCF in 2011 and 2013 respectively, and the CCF also accepts donations from the community. As at end August 2014, the balance of the CCF is around \$20.735 billion.

Community Care Fund Task Force: Membership

Chairperson

Dr Law Chi-kwong, GBS, JP

Vice-chairperson

Dr Bunny Chan Chung-bun, GBS, JP

Members of the Commission on Poverty

Hon Cheung Kwok-che

Mr Ho Hei-wah, BBS

Mr Chua Hoi-wai

Hon Michael Tien Puk-sun, BBS, JP

Co-opted Members

Miss Ophelia Chan Chiu-ling, BBS

Mr Lau Ming-wai, BBS, JP

Ms Chang Siu-wah

Dr Sigmund Leung Sai-man, JP

Dr Cheung Wai-lun, JP

Dr Donald Li Kwok-tung, SBS, JP

Dr Saimond Ip

Ms Nancy Tsang Lan-see, JP

Mr Frederick Lai Wing-hoi, JP

Dr Yuen Pong-yiu

Ex-officio Members

Permanent Secretary for Education (or his representative)

Permanent Secretary for Food & Health (Health) (or his representative)

Permanent Secretary for Home Affairs (or his representative)

Permanent Secretary for Labour & Welfare (or his representative)

Director of Home Affairs (or his representative)

Director of Social Welfare (or his representative)

Community Care Fund Task Force: Terms of Reference

- (1) advise the Commission on Poverty (CoP) on the Community Care Fund's various strategies and arrangements (including investment, finance and administrative operations), as well as the formulation of assistance programmes (including target beneficiaries, assistance amounts, handling of cross-sectoral issues and setting priorities);
- (2) co-ordinate and oversee the implementation of assistance programmes and review their effectiveness, as well as advising the CoP on the incorporation of programmes into the Government's regular assistance programme and service;
- (3) liaise closely with other CoP task forces and provide mutual support, as well as making timely report on work progress and plans to the CoP; and
- (4) collaborate with the CoP and other CoP task forces to prepare for the annual Poverty Summit, report the progress of the CoP's work to the public, and exchange with the members of the public and various sectors of the community on promoting poverty alleviation work.

Community Care Fund Assistance Programmes – Introduction

Since its establishment, the Community Care Fund (CCF) has launched 27 assistance programmes under the medical, education, housing, welfare and home affairs areas for target beneficiary groups including children, the elderly, persons with disabilities, patients, new arrivals and ethnic minorities, etc. People outside the existing safety net or the coverage of the Government's short-term relief measures have been identified and provided with assistance. The total commitments exceed \$4.029 billion.

Among the above 27 assistance programmes, 25 have already been rolled out, benefiting more than 810 000 people as at end August 2014. So far, four programmes that have been proven effective have been incorporated into the Government's regular assistance programme. The Government is progressively regularising another six programmes. The remaining two programmes will be rolled out soon.

In addition, the Government has provided an additional injection of \$1.5 billion into the CCF in 2011 to implement the programme to provide a one-off allowance of \$6,000 to new arrivals.

Progress of Regularisation of the Assistance Programmes



Housing



Medical



Welfare

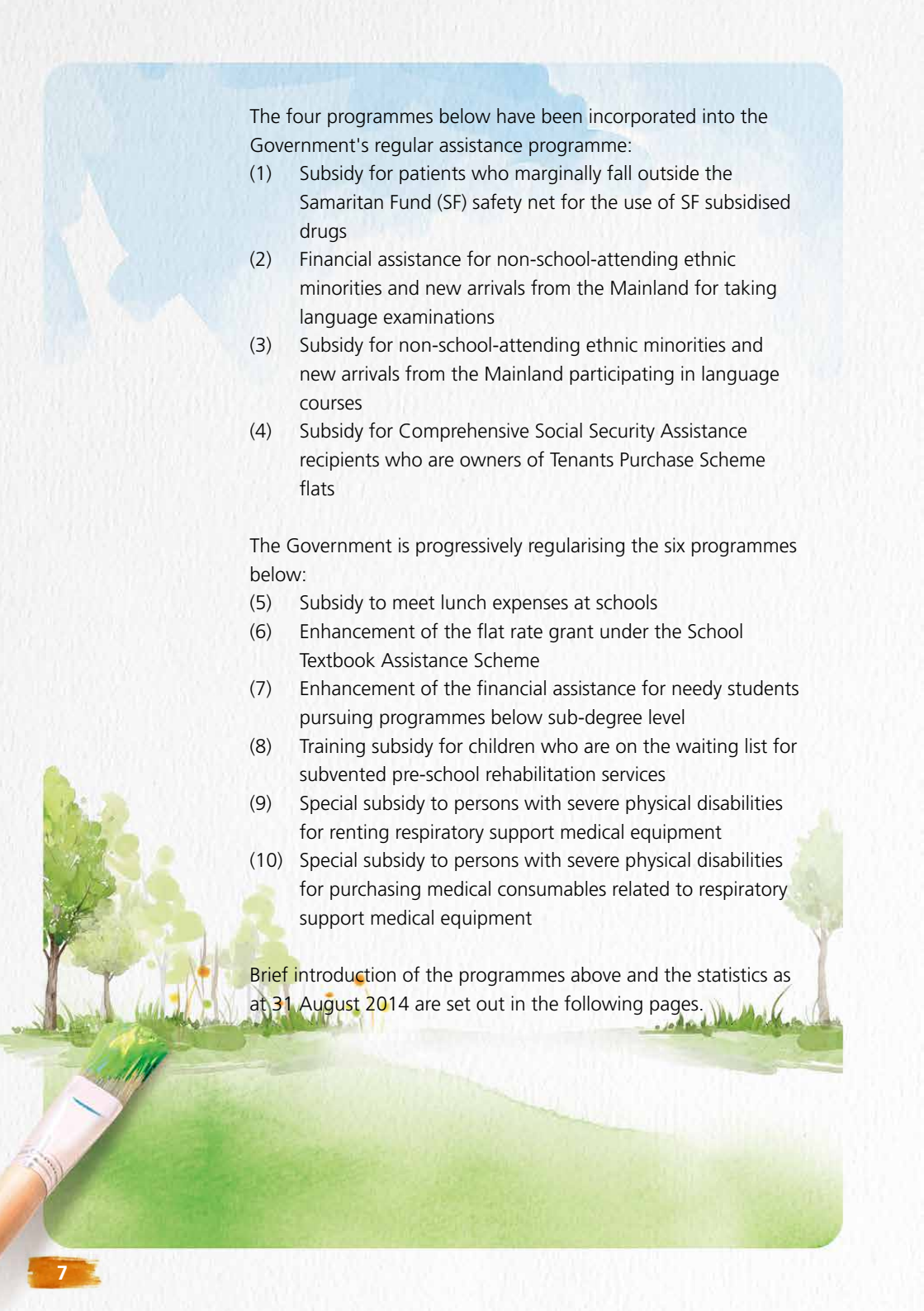


Education



Home Affairs

The Community Care Fund implements measures on a pilot basis to help the Government identify those that have been proven effective for incorporation into the regular assistance programme.



The four programmes below have been incorporated into the Government's regular assistance programme:

- (1) Subsidy for patients who marginally fall outside the Samaritan Fund (SF) safety net for the use of SF subsidised drugs
- (2) Financial assistance for non-school-attending ethnic minorities and new arrivals from the Mainland for taking language examinations
- (3) Subsidy for non-school-attending ethnic minorities and new arrivals from the Mainland participating in language courses
- (4) Subsidy for Comprehensive Social Security Assistance recipients who are owners of Tenants Purchase Scheme flats

The Government is progressively regularising the six programmes below:

- (5) Subsidy to meet lunch expenses at schools
- (6) Enhancement of the flat rate grant under the School Textbook Assistance Scheme
- (7) Enhancement of the financial assistance for needy students pursuing programmes below sub-degree level
- (8) Training subsidy for children who are on the waiting list for subvented pre-school rehabilitation services
- (9) Special subsidy to persons with severe physical disabilities for renting respiratory support medical equipment
- (10) Special subsidy to persons with severe physical disabilities for purchasing medical consumables related to respiratory support medical equipment

Brief introduction of the programmes above and the statistics as at 31 August 2014 are set out in the following pages.



1 Subsidy for patients who marginally fall outside the Samaritan Fund (SF) safety net for the use of SF subsidised drugs

Implementation Date

January to August 2012
(completed)

Funding Provision

\$4.293 million

Beneficiary Statistics

281 person-times

Disbursements

\$4.293 million

Programme

Subsidy for needy patients of Hospital Authority who marginally fall outside the SF safety net for the use of SF subsidised drugs

(to subsidise the drug costs borne by patient beneficiaries for the relevant drug treatment)

Major Eligibility Criteria

- The prevailing SF financial assessment mechanism was adopted by applying a more relaxed patient contribution ratio than that for the SF i.e. the patient's maximum contribution ratio is 20%.



Progress of Regularisation

The programme has been incorporated into the regular mechanism of the SF with effect from 1 September 2012.



2 Financial assistance for non-school-attending ethnic minorities and new arrivals from the Mainland for taking language examinations

Implementation Date

September 2011 to September 2013
(completed)

Funding Provision

\$0.502 million

Beneficiary Statistics

428 persons

Disbursements

\$0.452 million

Programme

Financial assistance for non-school-attending ethnic minorities and new arrivals from the Mainland for taking language-related international public examinations (reimbursement of relevant examination fees to beneficiaries on an accountable basis)

Major Eligibility Criteria

- Passed the family/household-based means-test establishing eligibility for Comprehensive Social Security Assistance Scheme, student financial assistance schemes or Hospital Authority Medical Fee Waiving Mechanism; or
- household income below 75% of the Median Monthly Domestic Household Income.



Progress of Regularisation

The programme has been incorporated into the Government's regular assistance programme with effect from 26 September 2013.

3 Subsidy for non-school-attending ethnic minorities and new arrivals from the Mainland participating in language courses

Implementation Date

March 2012 to September 2013
(completed)

Funding Provision

\$0.128 million

Beneficiary Statistics

171 persons

Disbursements

\$0.061 million

Programme

Subsidy for non-school-attending ethnic minorities and new arrivals from the Mainland participating in language courses (a subsidy of \$350 to \$700 is provided for participating in dedicated language courses of the Employees Retraining Board)



Major Eligibility Criteria

- Passed the family/household-based means-test establishing eligibility for Comprehensive Social Security Assistance Scheme, student financial assistance schemes or Hospital Authority Medical Fee Waiving Mechanism; or
- household income below 75% of the Median Monthly Domestic Household Income.

Progress of Regularisation

The programme has been incorporated into the Government's regular assistance programme with effect from 26 September 2013.



4 Subsidy for Comprehensive Social Security Assistance recipients who are owners of Tenants Purchase Scheme flats

Implementation Date

September 2011

(a one-off subsidy programme which has been completed)

Funding Provision

\$1.73 million

Beneficiary Statistics

825 households

Disbursements

\$1.65 million

Programme

Subsidy for Comprehensive Social Security Assistance (CSSA) recipients who are owners of Tenants Purchase Scheme flats for five years or above and not eligible for rent allowance under the CSSA Scheme (a subsidy of \$2,000 per household)



Major Eligibility Criteria

- CSSA households meeting the relevant criteria as at 1 July 2011.

Progress of Regularisation

The programme has been incorporated into the Government's regular assistance programme with effect from 1 April 2014.



5 Subsidy to meet lunch expenses at schools

Starting Date of Implementation

September 2011
(a three-school year programme)

Funding Provision

\$494.65 million

Beneficiary Statistics

180 925 person-times
(including 56 387, 60 386 and 64 152 beneficiaries in the school years of 2011/12, 2012/13 and 2013/14 respectively. For 2013/14, 64 152 is an estimated number of beneficiaries only)

Disbursements

Around \$446.15 million

Programme

Subsidy to meet lunch expenses at whole-day primary schools for students from low-income families
(the subsidy level is determined by the actual fee charged by lunch suppliers and the subsidy is directly paid to lunch suppliers through the schools)

Major Eligibility Criteria

- Whole-day primary school students receiving full grant from the Student Financial Assistance Agency and having lunch as arranged by their schools.



Progress of Regularisation

The programme will be incorporated into the Government's regular assistance programme in the 2014/15 school year.



6 Enhancement of the flat rate grant under the School Textbook Assistance Scheme

Starting Date of Implementation Beneficiary Statistics

October 2013
(a one-school year programme)

312 514 persons
(including 235 407 students meeting the eligibility criteria for the School Textbook Assistance Scheme (STAS) under the Student Financial Assistance Agency (SFAA) and 77 107 students on Comprehensive Social Security Assistance (CSSA))

Funding Provision

\$292.47 million

Disbursements

Around \$263.21 million
(including around \$186.17 million disbursed by SFAA and around \$77.04 million disbursed by the Social Welfare Department)

Programme

Enhancement of the flat rate grant under the STAS
(an additional grant of \$1,000 or \$500, depending on the different conditions)

Major Eligibility Criteria

- Primary and secondary students receiving full and half grant under the STAS (an additional grant of \$1,000 and \$500 respectively for each student); and
- primary and secondary students on CSSA (an additional grant of \$1,000 for each student).

Progress of Regularisation

The programme will be incorporated into the Government's regular assistance programme in the 2014/15 school year.





7 Enhancement of the financial assistance for needy students pursuing programmes below sub-degree level

Starting Date of Implementation Beneficiary Statistics

October 2013
(a one-school year programme)

Tuition Fee Reimbursement Scheme:
2 719 persons
Flat-rate Academic Expense Grant:
4 486 persons
(including 2 780 Vocational Training Council (VTC) students and 1 706 Yi Jin Diploma students)

Funding Provision

\$64.89 million

Disbursements

Tuition Fee Reimbursement Scheme:
Around \$42.13 million
Flat-rate Academic Expense Grant:
Around \$7.54 million
(including \$4.61 million for VTC students and \$2.93 million for Yi Jin Diploma students)



Programme

Enhancement of the financial assistance for needy students pursuing programmes below sub-degree level
(including the “Tuition Fee Reimbursement Scheme” and the “Flat-rate Academic Expense Grant”)

Major Eligibility Criteria

- Target beneficiaries of the “Tuition Fee Reimbursement Scheme” are students enrolling in eligible courses below sub-degree level;
- target beneficiaries of the “Flat-rate Academic Expense Grant” are students enrolling in eligible courses with duration of one year or above; the grant amount will be on par with the enhanced flat-rate grant receivable by eligible primary and secondary students after enhancement (i.e. \$2,094 and \$1,047 for each full-grant and half-grant student respectively) in the 2013/14 school year.

Progress of Regularisation

The programme will be incorporated into the Government’s regular assistance programme in the 2014/15 school year.



8 Training subsidy for children who are on the waiting list for subvented pre-school rehabilitation services

Starting Date of Implementation

December 2011

(extension of implementation in November 2012, July 2013 and February 2014 respectively)

Funding Provision

\$68.145 million

Beneficiary Statistics

2 840 persons

Disbursements

Around \$50.27 million

Programme

Training subsidy for children from low-income families who are on the waiting list for subvented pre-school rehabilitation services (a monthly subsidy of not more than \$2,615)

Major Eligibility Criteria

- On the waiting list for subvented pre-school rehabilitation services on or before 31 January 2014; and
- monthly household income not exceeding 75% of the Median Monthly Domestic Household Income.



Progress of Regularisation

The programme will be incorporated into the Government's regular assistance programme in the 4th quarter of 2014.



9 Special subsidy to persons with severe physical disabilities for renting respiratory support medical equipment

Starting Date of Implementation

January 2013
(extension of implementation in September 2013 and May 2014 respectively)

Funding Provision

\$9.68 million

Programme

Special subsidy to persons with severe physical disabilities for renting respiratory support medical equipment (according to the monthly household income and annual household disposable financial resources, the subsidy is disbursed in “full grant” (\$2,500 or \$2,000 per month); “three-quarters” (\$1,875 or \$1,500 per month) or “half grant” (\$1,250 or \$1,000 per month))

Major Eligibility Criteria

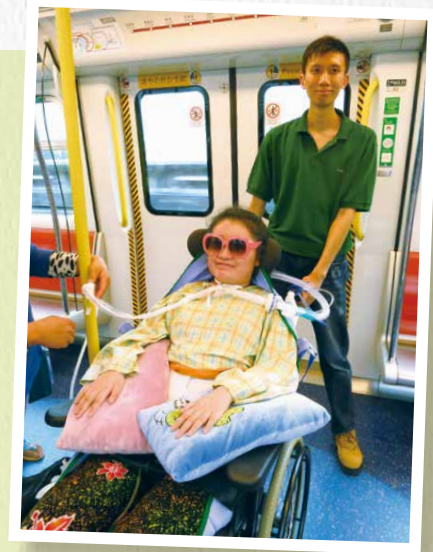
- Renting respiratory support medical equipment without any relevant assistance, at the same time living in the community and receiving Higher Disability Allowance under the Social Security Allowance Scheme; and
- monthly household income not exceeding 150% of the Median Monthly Domestic Household Income and the annual household disposable financial resources not exceeding \$180,000.

Beneficiary Statistics

175 persons

Disbursements

Around \$3.67 million



Progress of Regularisation

The programme will be incorporated into the Government's regular assistance programme in the 4th quarter of 2014.



10 Special subsidy to persons with severe physical disabilities for purchasing medical consumables related to respiratory support medical equipment

Starting Date of Implementation

September 2013
(extension of implementation in May 2014)

Funding Provision

\$10.9 million

Beneficiary Statistics

121 persons

Disbursements

Around \$0.95 million

Programme

Special subsidy to persons with severe physical disabilities for purchasing medical consumables related to respiratory support medical equipment (according to the monthly household income, the subsidy is disbursed in “full grant” (a maximum of \$2,000 per month); “three-quarters” (a maximum of \$1,500 per month) or “half grant” (a maximum of \$1,000 per month))

Major Eligibility Criteria

- Using respiratory support medical equipment without receiving any relevant subsidy to purchase related medical consumables, at the same time living in the community and receiving Higher Disability Allowance under the Social Security Allowance Scheme; and
- monthly household income not exceeding 150% of the Median Monthly Domestic Household Income and the annual household disposable financial resources not exceeding \$180,000.



Progress of Regularisation

The programme will be incorporated into the Government's regular assistance programme in the 4th quarter of 2014.

Assistance Programmes Completed/ In Progress



Housing



Medical



Welfare



Education



**Home
Affairs**

The Community Care Fund has rolled out assistance programmes under the medical, education, housing, welfare and home affairs areas. Brief introduction of the programmes and the statistics as at 31 August 2014 are set out in the following pages. Some of the programmes have been completed.



1 Subsidy for patients for specified self-financed cancer drugs which have not yet been brought into the Samaritan Fund

Starting Date of Implementation

August 2011
(current funding provision for 4 years)

Funding Provision

\$349.58 million
(including the administrative and audit expenses of this programme and the programme on page 8 of this booklet)

Beneficiary Statistics

3 062 person-times

Disbursements

Around \$238.02 million

Programme

Subsidy for patients of Hospital Authority for specified self-financed cancer drugs which have not yet been brought into the Samaritan Fund (SF) safety net but have been rapidly accumulating medical scientific evidence and with relatively higher efficacy (to subsidise the drug costs borne by patient beneficiaries for the relevant drug treatment)

Major Eligibility Criteria

- The prevailing SF financial assessment mechanism and its sliding scale are adopted as the financial assessment criteria.



Progress and Evaluation

The programme initially covered six specified self-financed cancer drugs and was expanded to nine subsequently.

The evaluation results were reported to the former Steering Committee on the Community Care Fund in May 2012.



2 Elderly dental assistance programme

Starting Date of Implementation

September 2012

Beneficiary Statistics

1 007 persons

Funding Provision

\$100 million

Disbursements

Around \$7.1 million

Programme

Subsidy for needy elders with low income for dentures and other related dental services (a maximum subsidy of \$13,140 for dental services for each beneficiary, a referral fee of \$50 for each referral by non-governmental organisations, and an accompanying service fee of \$70 per hour based on the actual duration of accompanying service provided (if applicable))

Major Eligibility Criteria

- Aged 60 or above;
- not receiving Comprehensive Social Security Assistance; and
- users of the “Integrated Home Care Services” or “Enhanced Home and Community Care Services” or “Home Help Service” subvented by the Social Welfare Department as at 31 December 2013 and are paying level 1 or level 2 fee charge of the above services.



Progress and Evaluation

1 260 eligible elders have been referred to receive the dental services under the programme.

The interim evaluation results were reported to the Commission on Poverty in September 2013.

The Community Care Fund Task Force has set up a working group to consider expanding progressively the eligibility criteria of the programme, taking into account the progress of implementation and the experience gained, as well as factors such as the number of participating dentists.



3 School-based fund (cross-boundary learning activities)

Starting Date of Implementation

July 2011
(a three-year programme)

Funding Provision

\$194.66 million

Beneficiary Statistics

57 730 persons

Disbursements

Around \$134.45 million

Programme

Subsidise primary and secondary school students from low-income families to participate in cross-boundary learning activities/competitions (a subsidy of not more than \$3,000 for each benefited student to participate in cross-boundary learning activities and competitions respectively)



Major Eligibility Criteria

- Students receiving full or half grant from the Student Financial Assistance Agency;
- students receiving Comprehensive Social Security Assistance; or
- students meeting the “financially needy” criteria as determined by individual schools.

Progress and Evaluation

The programme was initially set up to subsidise eligible students to participate in cross-boundary learning activities. The scope of the programme was expanded in July 2012 to subsidise eligible students to represent Hong Kong to take part in cross-boundary competitions.

The evaluation results were reported to the Commission on Poverty in March 2014 which approved to suspend the programme after completion in 2013-14. Schools can apply for funding to conduct cross-boundary learning activities through the Quality Education Fund mechanism.



4 After-school care pilot scheme

Starting Date of Implementation

September 2012
(a three-school year programme)

Funding Provision

\$108.75 million

Beneficiary Statistics

18 798 person-times

Disbursements

Around \$61 million



Programme

Co-ordinate and integrate after-school learning and supplementary activities for Primary one to Secondary three students from low-income families, including the addition of new and appropriate elements to extend their after-school activities (the subsidy cap for each project is \$500,000)

Major Eligibility Criteria

- Primary one to Secondary three students receiving Comprehensive Social Security Assistance or full grant from the Student Financial Assistance Agency (expanded to cover Primary one to Secondary three students receiving half grant in 2013/14 school year); and
- participating schools or non-governmental organisations (NGOs) have discretion to include needy students who do not meet the above criteria, but the number of these students should not exceed 25% of the total number of student beneficiaries.



Progress and Evaluation

The evaluation results were reported to the Commission on Poverty in March 2014 which approved to extend the implementation of the scheme to the 2014/15 school year.

In the 2014/15 school year, a total of 100 schools and NGOs have participated in the scheme.



5 Extra travel subsidy for needy special school students

Starting Date of Implementation

October 2013
(a two-school year programme)

Funding Provision

\$3.64 million

Beneficiary Statistics

1 736 persons

Disbursements

Around \$1.66 million

Programme

Extra travel subsidy for needy special school students (the amount of subsidy is 50% of the amount of travel subsidy an eligible student can receive on top of the Student Travel Subsidy (STS) disbursed by the Student Financial Assistance Agency (SFAA))

Major Eligibility Criteria

- Needy special school students from Primary one to Secondary six who are physically disabled, visually impaired, hearing impaired, mildly, moderately or severely intellectually disabled, and are receiving full grant or half grant of STS from SFAA.



Progress and Evaluation

As at 31 August 2014, subsidy was disbursed to all 1 736 primary and secondary students receiving grant of STS from SFAA.

The progress of evaluation will be reported to the Community Care Fund Task Force in future.



6 Subsidy for Comprehensive Social Security Assistance recipients living in rented private housing

Starting Date of Implementation

October 2011 (first launched)
September 2013 (launched for the second time)
(to be launched for the third time in September 2014)

Funding Provision

\$33.671 million (first launched)
\$56.81 million (launched for the second time)
\$49.27 million (to be launched for the third time)

Beneficiary Statistics

22 605 households (first launched)
17 767 households (launched for the second time)
Over 14 400 households are expected (to be launched for the third time)

Disbursements

\$32.085 million (first launched)
Around \$51.3 million (launched for the second time)

Programme

Subsidy for Comprehensive Social Security Assistance (CSSA) recipients living in rented private housing and paying a rent exceeding the maximum rent allowance under the CSSA Scheme

(first launched: a subsidy of \$1,000 for one-person household; and \$2,000 for two-or-more-person household)

(launched for the second time: a subsidy of \$2,000 for one-person household; and \$4,000 for two-or-more-person household)



Major Eligibility Criteria

- CSSA households living in rented private housing paying actual rents which exceeded the maximum rent allowance under the CSSA Scheme as at 1 July 2011 (first launched) and as at 1 July 2013 (launched for the second time) respectively.

Progress and Evaluation

Subsidy was disbursed to most of the eligible households.

The evaluation results were reported to the Commission on Poverty in August 2014 which approved to re-launch the programme.



7 Relocation allowance for eligible residents of sub-divided units in industrial buildings who have to move out as a result of the Buildings Department's enforcement action

Starting Date of Implementation

December 2011

Beneficiary Statistics

140 households (204 persons)

Funding Provision

\$4.43 million

Disbursements

Around \$0.39 million

Programme

Relocation allowance for eligible residents of sub-divided units in industrial buildings who have to move out as a result of the Buildings Department (BD)'s enforcement action (an allowance of \$2,500 for one-person household, \$5,500 for two-to-three-person household; and \$7,100 for four-or-more-person household)

Major Eligibility Criteria

- Persons who have passed the family/household-based means-test establishing eligibility for Comprehensive Social Security Assistance Scheme, student financial assistance schemes, Hospital Authority Medical Fee Waiving Mechanism or Work Incentive Transport Subsidy; or
- household income not exceeding 100% of the Median Monthly Domestic Household Income for one-person households; and not exceeding 75% of the Median Monthly Domestic Household Income for two-or-more-person households.



Progress and Evaluation

BD has inspected 60 target industrial buildings, and has so far identified cases of unauthorised sub-divided units for domestic use in 12 of them. BD has taken enforcement action against these cases and enforcement action was completed in four buildings. BD will continue to follow up the enforcement actions in other industrial buildings.

Evaluation is being planned and the progress will be reported to the Community Care Fund Task Force in future.



8 Subsidy for low-income elderly tenants in private housing

Implementation Date

9 July 2012 to 31 January 2013
(a one-off subsidy programme which has been completed)

Funding Provision

\$11.24 million

Beneficiary Statistics

2 095 households (2 599 persons)

Disbursements

Around \$10.4 million

Programme

Subsidy for low-income elderly tenants in private housing
(a subsidy of \$4,000 for one-person elderly household; \$8,000 for two-person elderly household; and \$12,000 for three-or-more-person elderly household)

Major Eligibility Criteria

- Elderly households aged 65 or above;
- not receiving Comprehensive Social Security Assistance;
- household income and rent not exceeding the specified limits; and
- not owning any property in Hong Kong.



Progress and Evaluation

The evaluation results were reported to the Commission on Poverty in May 2013.



9 Subsidy for low-income persons who are inadequately housed

Implementation Date

8 October 2012 to 8 April 2013
(a one-off subsidy programme which has been completed)

Funding Provision

\$174.43 million

Programme

Subsidy for low-income persons who are inadequately housed (a subsidy of \$3,000 for one-person household; \$6,000 for two-person household; and \$8,000 for three-or-more-person household)

Major Eligibility Criteria

- Persons renting on a monthly basis rooms/cubicles, cocklofts or bedspaces in private permanent housing; persons renting bedspaces offered under the Home Affairs Department's Singleton Hostel Programme; persons residing in temporary housing; or homeless persons;
- household income and rent not exceeding the specified limits;
- not receiving Comprehensive Social Security Assistance; and
- not owning any property in Hong Kong.

Beneficiary Statistics

25 769 households (59 017 persons)

Disbursements

Around \$150.2 million



Progress and Evaluation

The evaluation results were reported to the Commission on Poverty in May 2013.



10 One-off living subsidy for low-income households not living in public housing and not receiving CSSA

Starting Date of Implementation

2 December 2013 to 29 August 2014
(first launched)
(to be re-launched in January 2015)

Funding Provision

\$638.33 million (first launched)
Around \$468.12 million (to be re-launched)

Beneficiary Statistics

46 746 households (112 660 persons)
(first launched)
53 140 households (126 103 persons)
are expected (to be re-launched)

Disbursements

Around \$343.81 million (first launched)

Programme

One-off living subsidy for low-income households not living in public housing and not receiving Comprehensive Social Security Assistance (CSSA) (a subsidy of \$3,500 for one-person household; \$7,000 for two-person household; and \$10,000 for three-or-more-person household)

Major Eligibility Criteria

- Persons renting on a monthly basis private permanent housing, industrial buildings or commercial buildings; persons renting bedspaces offered under the Home Affairs Department's Singleton Hostel Programme; persons residing in temporary housing; homeless persons; or persons residing in vessels;
- household income and rent not exceeding the specified limits;
- not receiving CSSA; and
- not owning any property in Hong Kong.



Progress and Evaluation

The evaluation results were reported to the Commission on Poverty in August 2014 which approved to re-launch the programme.

11 Special care subsidy for the severely disabled



Starting Date of Implementation

September 2011
(extension of implementation in November 2012
and November 2013 respectively)

Funding Provision

\$142.68 million

Beneficiary Statistics

4 942 person-times

Disbursements

Around \$100.1 million

Programme

Subsidy for the severely disabled persons aged below 60 who are non-Comprehensive Social Security Assistance recipients, requiring constant attendance and living in the community (according to the monthly household income of the applicants, the subsidy is disbursed in “full grant” (\$2,000 per month); “three-quarters” (\$1,500 per month) or “half grant” (\$1,000 per month))

Major Eligibility Criteria

- Aged below 60 and receiving Higher Disability Allowance under the Social Security Allowance Scheme as at 31 July 2013;
- living in the community as at 31 July 2013; and
- monthly household income not exceeding 150% of the Median Monthly Domestic Household Income.



Progress and Evaluation

The evaluation results were reported to the Commission on Poverty (CoP) in May 2013.

The CoP in August 2013 approved to extend again the implementation of the programme in November 2013 to provide a maximum of 12 months of subsidy.

12 Subsidy for elders who are on the waiting list of Integrated Home Care Services (Ordinary Cases) for household cleaning and escorting services for medical consultations



Starting Date of Implementation

October 2011
(extension of implementation in December 2012)

Funding Provision

\$15.256 million

Beneficiary Statistics

1 341 persons

Disbursements

Around \$8.18 million

Programme

Subsidy for elders aged 65 or above from low-income families who are on the waiting list for Integrated Home Care Services (IHCS) (Ordinary Cases) for household cleaning and escorting services for medical consultations

(a monthly subsidy of not more than \$560)

Major Eligibility Criteria

- Aged 65 or above; living in the community; and have been on the waiting list for IHCS (Ordinary Cases) on or before 31 October 2012; and
- monthly household income not exceeding 75% of the Median Monthly Domestic Household Income.



Progress and Evaluation

The evaluation results were reported to the Commission on Poverty in May 2013.

Existing elderly beneficiaries of the programme who are still on the waiting list for IHCS (Ordinary Cases) could have their subsidy period extended from 31 March 2014 to 31 December 2014.

13 Incentive scheme to further encourage CSSA recipients of the Integrated Employment Assistance Programme for Self-reliance (IEAPS) to secure employment



Starting Date of Implementation

April 2014
(a three-year programme)

Funding Provision

\$226.62 million

Beneficiary Statistics

2 050 persons
(this is the number of participants randomly selected from the IEAPS cases who agree to participate in the incentive scheme)

Disbursements

Around \$2.21 million
(the disbursement is for payment of service fees to the non-governmental organisations which assist in implementing the incentive scheme)

Programme

The earnings from employment exceeding the prescribed disregarded earnings limit (i.e. the earnings not disregarded) under the Comprehensive Social Security Assistance (CSSA) Scheme will be

accumulated in the form of incentive payment. When the amount of incentive payment accumulated reaches the incentive target, the Community Care Fund (CCF) will release the full amount of the target incentive payment to the participants.

Major Eligibility Criteria

- Able-bodied CSSA recipients of the IEAPS.

Progress and Evaluation

A working group has been set up under the CCF Task Force to follow up the implementation progress of the scheme and its evaluation study.



14 Pilot scheme on living allowance for carers of the elderly persons from low income families



Starting Date of Implementation

June 2014
(a two-year programme)

Funding Provision

\$126 million

Beneficiary Statistics

6 carers

Disbursements

Around \$0.03 million

Programme

Living allowance for carers of the elderly persons from low income families
(a monthly subsidy of \$2,000 would be given to each eligible carer who takes care of one elderly person and a maximum of \$4,000 each for those who take care of more than one elderly person at the same time)

Major Eligibility Criteria

- The elderly person(s) being taken care of should live in Hong Kong and has/have been on the Central Waiting List (CWL) for subsidised long term care services on or before the specified date, and is/are not using any residential care services;
- the carer is a Hong Kong resident, is capable of taking up the caregiving role, is not engaging in any form of employment relationship with the elderly person(s) whom he/she is taking care of, and is required to provide care-giving work of not less than the prescribed hours per month; and
- the carer is not receiving Comprehensive Social Security Assistance or Old Age Living Allowance and is having a monthly household income not exceeding 75% of the Median Monthly Domestic Household Income.



Progress and Evaluation

33 non-governmental organisations that operate District Elderly Community Centres and/or Neighbourhood Elderly Centres assist to provide support services to the carers under the pilot scheme.

The result of the evaluation study will be reported to the Commission on Poverty in future.

15 Subsidy for owners' corporations of old buildings

Starting Date of Implementation

October 2012
(a three-year programme)

Funding Provision

\$67.2 million

Beneficiary Statistics

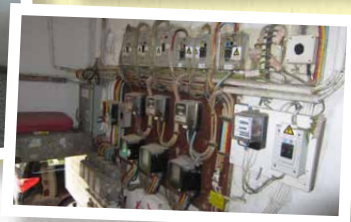
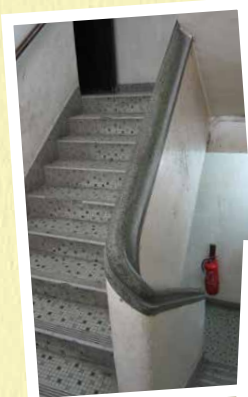
1 120 owners' corporations

Disbursements

Around \$6 million

Programme

Subsidy for owners' corporations of old buildings (eligible owners' corporations can be granted a subsidy with the total amount capped at \$20,000 for relevant expenditure items on an accountable basis)



Major Eligibility Criteria

- Residential or composite buildings aged 30 years or above; and
- average rateable value of the residential units does not exceed \$120,000 for urban area and \$92,000 for New Territories.

Progress and Evaluation

Among the 4 500 eligible owners' corporations, about 2 880 have indicated their intention to make an application.

The progress of evaluation will be reported to the Community Care Fund Task Force in future.

Assistance Programmes to be Rolled Out Soon

(1) Providing hostel subsidy for needy undergraduate students

- This programme provides a subsidy for needy undergraduate students who are offered a student hostel place to meet student hostel expenses, such that they are not denied hostel accommodation because of lack of means. Under the three-year programme from the 2014/15 to 2016/17 school year, each eligible student will be disbursed with a maximum subsidy of \$8,000 per year. The funding provision is \$137 million and it is estimated that about 20 600 person-times will benefit.

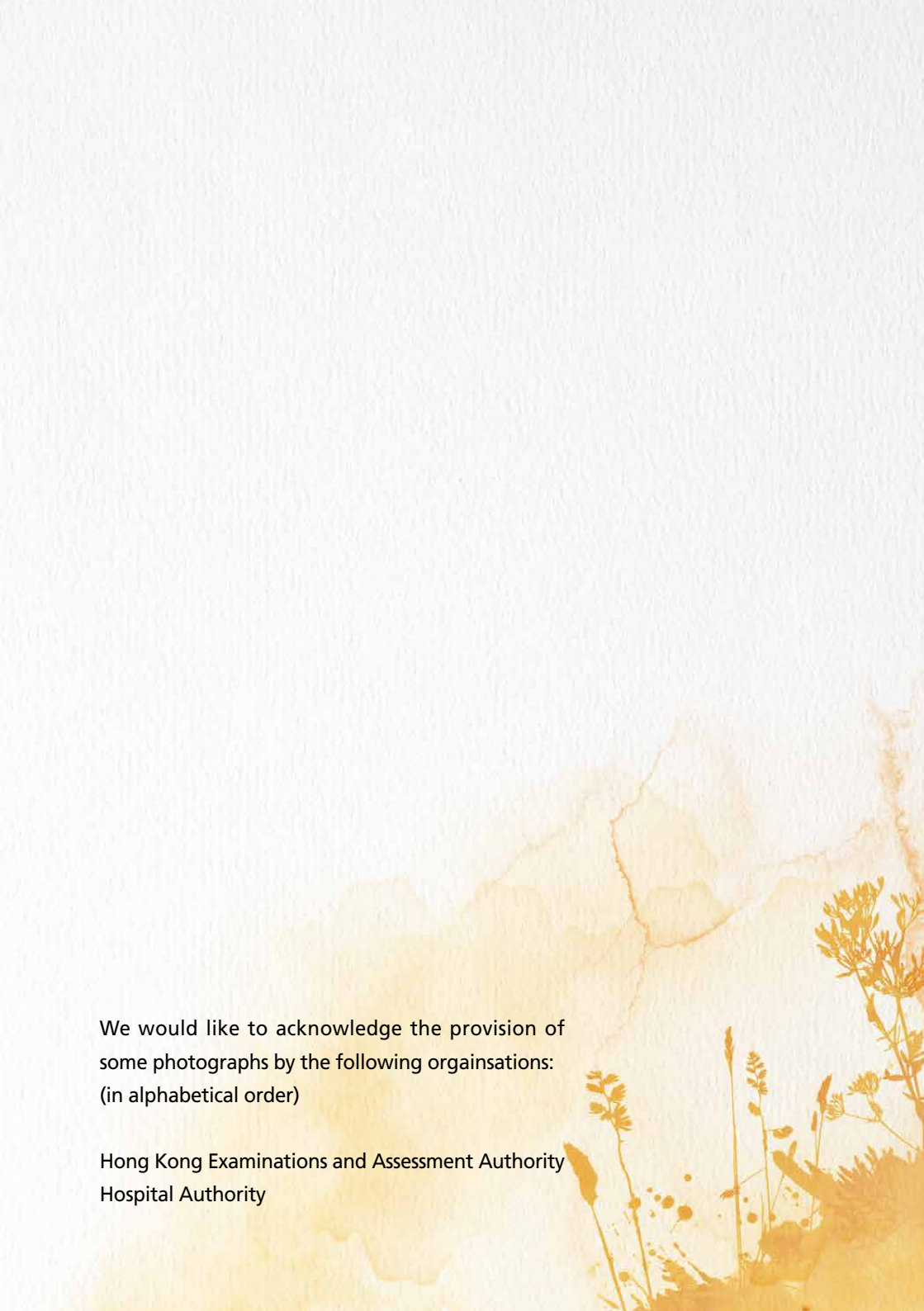
(2) Increasing the academic expenses grant under the Financial Assistance Scheme for Post-secondary Students

- This programme aims at strengthening support for needy students pursuing locally-accredited self-financing post-secondary programmes through the disbursement of additional academic expenses grant. Under the three-year programme from the 2014/15 to 2016/17 school year, each eligible student will be disbursed with a maximum additional grant of \$2,000 per year. The funding provision is \$151 million and it is estimated that about 93 000 person-times will benefit.

Way Forward

Over the past three years, the Community Care Fund (CCF) rolled out various assistance programmes which is a manifestation of the flexibility of CCF operation. In addition, through the continuous review and evaluation mechanism under the CCF, relevant Government departments/organisations responsible for implementing the programmes could draw on experience gained and collect data as soon as possible to determine which programmes need to be revised or extended, or have been proven effective for consideration of incorporating into the Government's regular assistance programme.

The CCF will continue to plug the gaps in the existing system and, taking into account the views of the public and stakeholders, launch more programmes to provide appropriate assistance to the underprivileged and low-income families.



We would like to acknowledge the provision of
some photographs by the following organisations:
(in alphabetical order)

Hong Kong Examinations and Assessment Authority
Hospital Authority

The background of the page is a watercolor illustration. At the top, there are blue mountains. Below them is a light blue sky. In the center, there is a small island or patch of land with several green trees of different sizes and some yellow flowers. At the bottom, there is a green hillside.

Community Care Fund

Website : <http://www.communitycarefund.hk>