

Progress Report of the Commission on Poverty (CoP) and its Task Forces

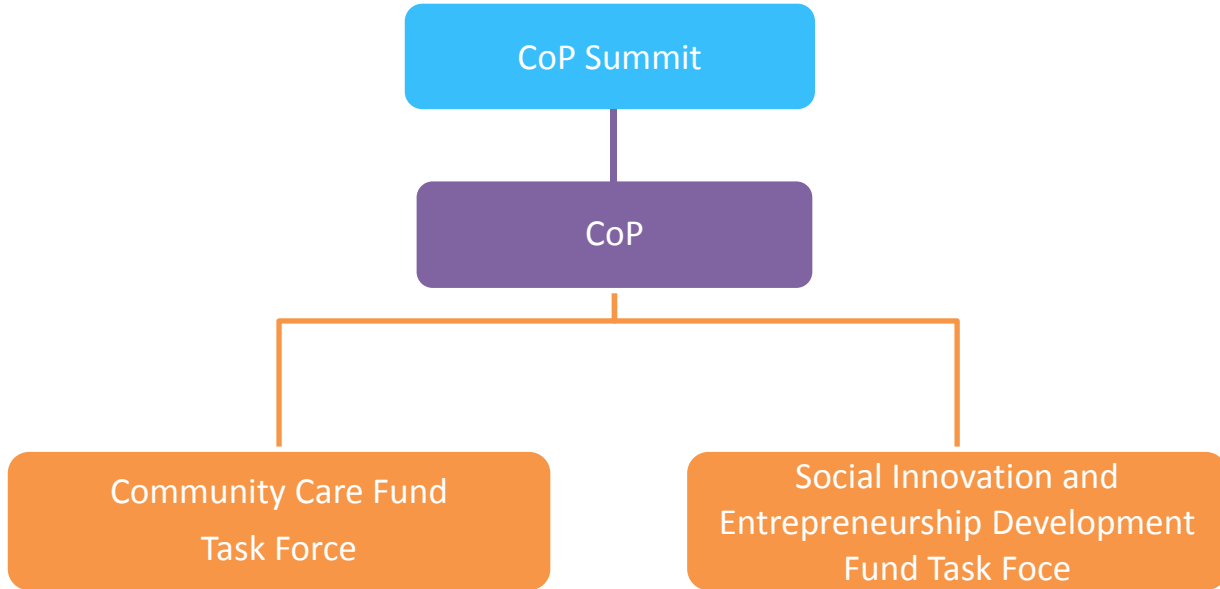
Chief Secretary for Administration and Chairperson of the CoP – Mr Matthew Cheung Kin-chung

Secretary for Labour and Welfare and Chairperson of the Community Care Fund Task Force –
Dr Law Chi-kwong

Chairperson of the Social Innovation and Entrepreneurship Development Fund Task Force –
Dr Jane Lee Ching-yee

Commission on Poverty

- Work closely with the Government in formulating and implementing policies on poverty alleviation and support for the disadvantaged
- Fully deliberated specific issues and has facilitated the implementation of policies and initiatives on poverty alleviation and support for the disadvantaged, benefitting different groups in need



The Government attaches great importance to poverty alleviation

- The Government's philosophy in poverty alleviation is based on the following principles :

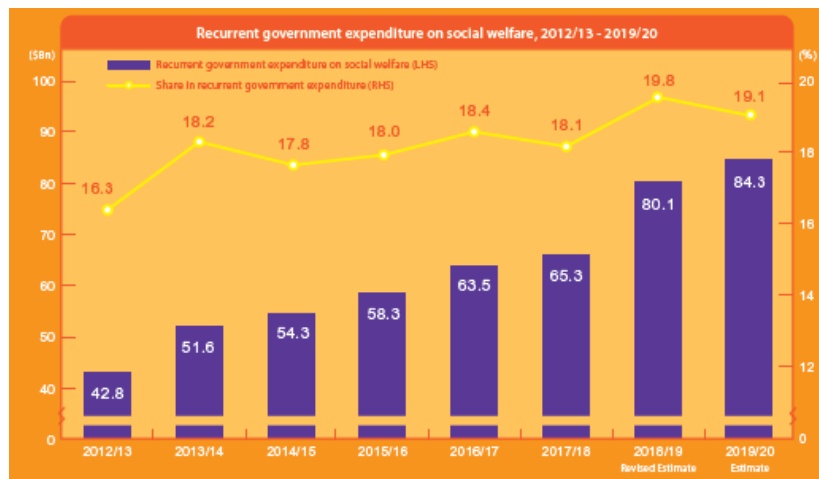
尊重受助人
pro-user

愛護兒童
pro-child

支援家庭
pro-family

鼓勵就業
pro-work

- In 2019-20, the estimated recurrent expenditure on education, social welfare and healthcare amount to over **\$250 billion**, which accounts of about 60 per cent of the total recurrent expenditure. The recurrent expenditure on social welfare is estimated to reach \$84.3 billion, almost doubled than that in 2012/13



Diverse policy tools in poverty alleviation

Recurrent cash measures

(Poverty alleviation effectiveness reflected in the Poverty Line's main analytical framework)

CSSA

Old age allowance

Disability allowance

Old Age Living Allowance

Working Family Allowance

Work Incentive Transport Subsidy

One-off measures

(Poverty alleviation effectiveness not reflected in the Poverty Line's main analytical framework)

One-off extra allowance to recipients of Social Security Payments

Reducing salaries tax and tax under personal assessment and waving rates

Caring and Sharing Scheme(\$4,000 Scheme)

Community Care Fund

(Poverty alleviation effectiveness not reflected in the Poverty Line's main analytical framework)

Provision of Subsidy to Needy Primary and Secondary Students for Purchasing Mobile Computer Devices to Facilitate the Practice of e-Learning

Elderly Dental Assistance Programme

Subsidy for Eligible Patients to Purchase Ultra-expensive Drugs

First Phase Programme of Medical Assistance Programmes

Diverse policy tools in poverty alleviation (con't)

Government Subsidied Services

(Poverty alleviation effectiveness not reflected in the Poverty Line's main analytical framework)

Public rental housing

Elderly Health Care Voucher

\$2 public transport scheme

Kindergarten education scheme

After School care programme

Residential and Communal care services for Elderly

On-site Pre-school Rehabilitation Services for Students with Special needs

Financial support for primary, secondary and post-secondary education

Employees retraining services

Other measures

(Poverty alleviation effectiveness not reflected in the Poverty Line's main analytical framework)

Statutory Minimum wage

Examples of latest relief measures

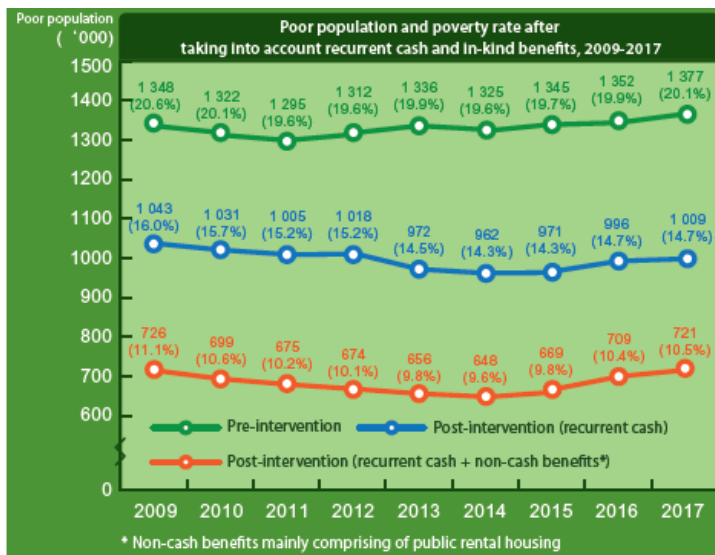
2018 Policy Address and 2019-20 Budget :

- Non-means tested Public Transport Fare Subsidy Scheme*
- One-off extra one month allowance to recipients of CSSA, Old Age Allowance, Disability Allowance, Old Age Living Allowance, Work Incentive Transport Subsidy and Working Family Allowance*
- Reduce 2018-19 salaries tax and tax under personal assessment, and waive rates for four quarters of 2019-20*
- One-off grant of \$2,500 to student in need*
- One-off additional \$1,000 worth of Elderly Health Care Voucher, the accumulation limit of vouchers will also be raised from \$5,000 to \$8,000*
- Lower the age limit of the Community Care Fund Elderly Dental Assistance Programme to 65 or above for eligible elderly persons*
- Provide extra residential care and subsidised day care places for the elderly, and provide outreach services for private elderly homes*

*These measures' poverty alleviation effectiveness will not be reflected in the Poverty Line's main analytical framework

Poverty Situation in 2017

- The poverty rate in 2017 maintained at the same level as that of 2016, overall poverty situation remained largely stable
- Poverty alleviation effectiveness of the enhanced Old Age Living Allowance and the Working Family Allowance will be reflected in future poverty situation analysis



2017

Recurrent cash benefits lifted **370 000 persons** out of poverty

Reduced the poverty rate by **5.4 percentage points**

Taking into account in-kind benefits mainly comprising public rental housing, an additional **290 000 persons** were lifted out of poverty

The poverty rate was further reduced to **10.5%**

Collaboration between the community, business and government : nurture and equip youth from grassroots background to promote their upward mobility and reduce inter-generation poverty

- “Life Buddies” Mentoring Scheme and “Future Stars” Programme are examples of cross-sector collaboration projects



Launched the “Be a Government Official for a Day” programme, the new round of the programme will cover more senior government officials



A new mentoring scheme will be launched in July 2019

Community Care Fund

- Since its establishment in 2011, the Community Care Fund (CCF) has launched **47** assistance programmes, the total commitment is around **\$9.5 billion**, benefitted over **1.68 million cases**
- So far, **13** effective programmes have been incorporated into the Government's regular assistance programmes. In addition, **7** self-financed cancer drugs originally subsidised by the First Phase Programme of Medical Assistance Programmes have been incorporated to the scope of regular assistance under the Samaritan Fund/the HA Drug Formulary



Community Care Fund – Programmes endorsed/extended by the CoP

- The CoP endorsed the implementation of the “**Provision of Subsidy to Needy Primary and Secondary Students for Purchasing Mobile Computer Devices to Facilitate the Practice of e-Learning**” Programme and the “**Subsidy to Purchase and Construct Modular Housing**” Pilot Scheme. Total commitment of the 2 new programmes is around **\$450 million**, about **102 000** students and **88 households (about 150 persons)** are expected to benefit from the new programmes.
- In addition, the CoP also endorsed the extension of **9 existing assistance programmes**, including 3 social welfare programmes, 3 education programmes, 2 medical programmes and 1 home affairs programme to provide continuous support to those in need



Community Care Fund – Support for students

- Provided subsidy through the CCF for needy primary and secondary students for purchasing mobile computer devices to facilitate the practice of e-Learning

- Extended the following CCF programmes:

“Enhancing the Academic Expenses Grant for Students with Special Education Needs and Financial Needs Pursuing Post-Secondary Programmes”;

“Providing Hostel Subsidy for Needy Undergraduate Students”; and

“Increasing the Academic Expenses Grant under the Financial Assistance Scheme for Post-secondary Students”



Community Care Fund – Support for persons with disabilities and their carers

- Strengthened a range of support measures for persons with disabilities and their carers, including the extension of the “Special Care Subsidy for the Severely Disabled” programme and the “Pilot Scheme on Living Allowance for Low-income Carers of Persons with Disabilities”



Community Care Fund – Support for patients with financial needs

- For medical programmes, in addition to extending 2 existing programmes, the CoP also approved to include **10 new specified self-financed cancer drugs, 2 new drugs for treating uncommon disorders and 3 new medical devices**
- The CoP also endorsed the **enhancement of the means test mechanism for the CCF Medical Assistance Programmes** to alleviate the financial burden on patients' families



Community Care Fund – Support for the Elderly

- Extended the “Pilot Scheme on Living Allowance for Carers of Elderly Persons from Low-income Families” (Phase III commenced in October 2018)
- From 1 February onwards, the age limit for target beneficiaries of the “Elderly Dental Assistance Programme” was expanded to cover all eligible elderly persons aged 65 or above. A series of enhancement were also introduced, including:

Relaxing the number of visits for other free dental services from 1 time to 2 times for elderly persons not suitable to accept removable dentures

Raising the maximum number of X-ray films claim applications in each case to 6 films for each eligible dentist





Progress Report by Social Innovation and Entrepreneurship Development Fund Task Force

Facilitate and Foster the Development of the Social Innovation Ecosystem



Over \$150 Million Allocated to Various Initiatives

Latest Accomplishments

177
Projects Funded

~3 800
Social Entrepreneurs
Nurtured



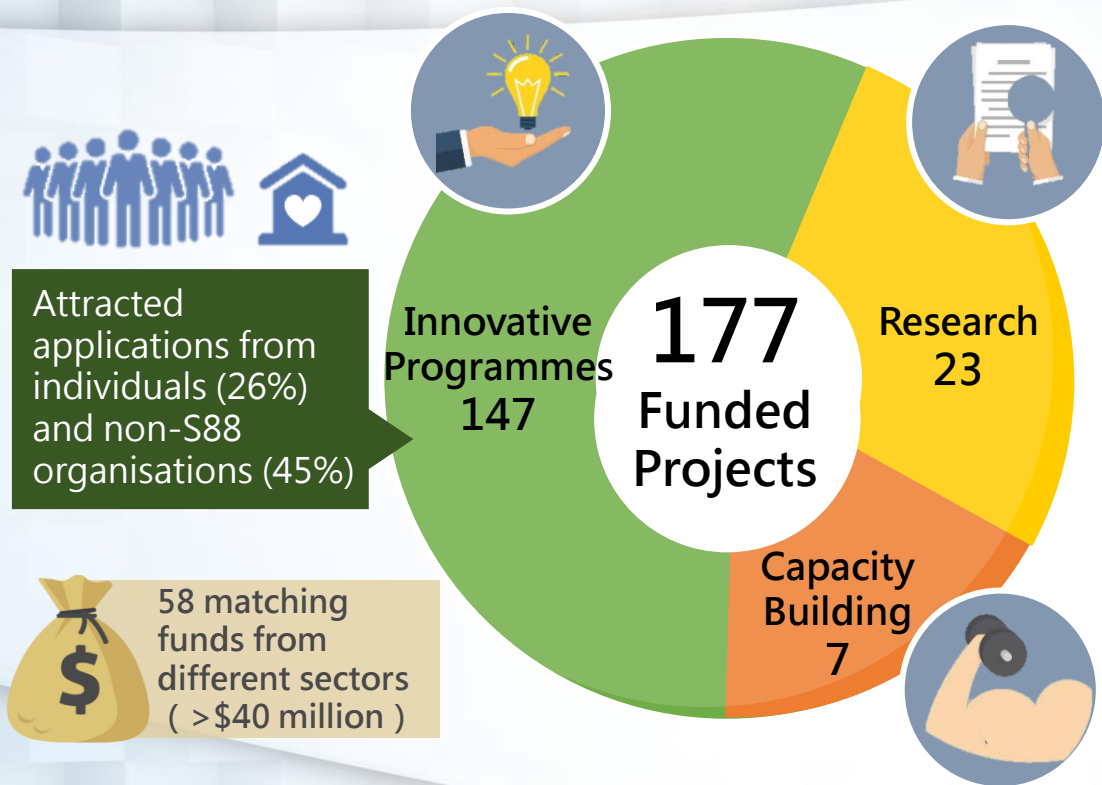
1 200+
Innovative Ideas
Generated

160 000
Beneficiaries

560+ Training and Promotion Events
140 000+ People Attended

Figures up to end-March 2019

Overview of Funded Projects



By beneficiaries:

Elderly	43
Children and Youth	41
Persons with Disabilities	36
Low-income Families	26
Ethnic Minorities	15
Others	16

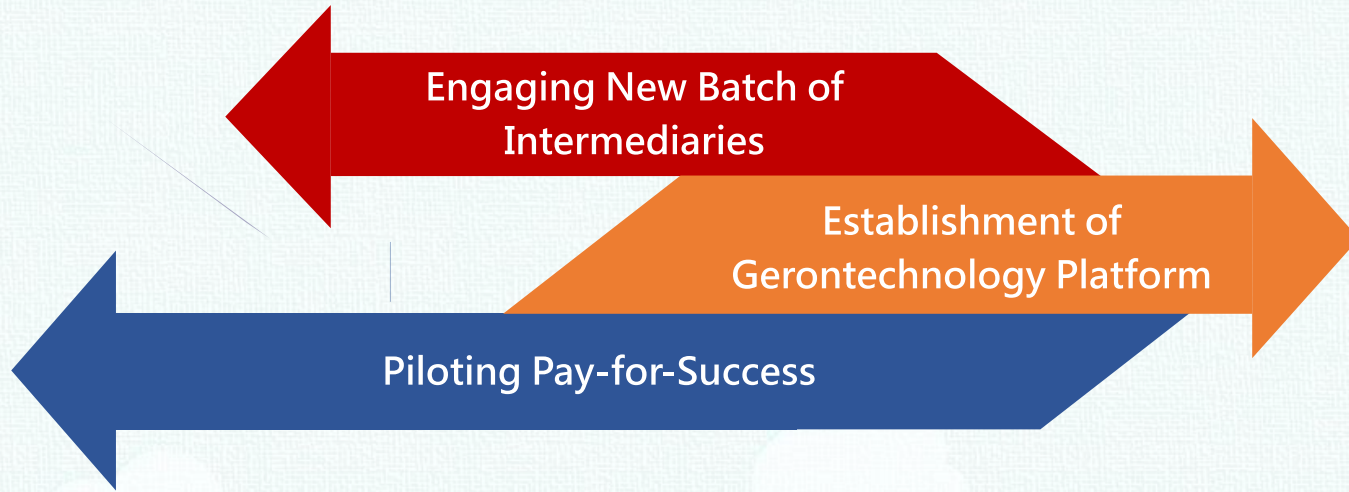


By service areas:

Healthcare	38
Diet	11
Living	19
Transport	10
Job Training and Opportunities	22
Education and Learning	42
Community Participation	22
Others	13

Figures up to end-March 2019

Major Upcoming Initiatives



Engaging New Batch of Intermediaries

Sustain the momentum created within the social innovation space

Engage a New Batch of Intermediaries

Further enhance and develop the Social Innovation ecosystem



Innovative Programmes



Capacity Building



Research

Establishment of Gerontechnology Platform

Link up stakeholders on both the supply and demand sides so as to foster the development of the gerontechnology ecosystem in Hong Kong



Piloting Pay-for-Success

Encourage outcome-based approach

Foster cross-sector capacity building

Leverage investments from private sector / philanthropy

Fund innovative social services



Explore new funding model



The way forward

- Explore and implement more initiatives on poverty alleviation and support for the disadvantaged in collaboration with relevant policy platforms according to the four principles put forward by the Chief Executive, i.e. pro-child, pro-family, pro-work and pro-user
- Promote more cross-sector and cross-profession collaboration as well as public-private partnership to tackle poverty issues
- Continue monitoring the poverty situation and the effectiveness of poverty alleviation policies