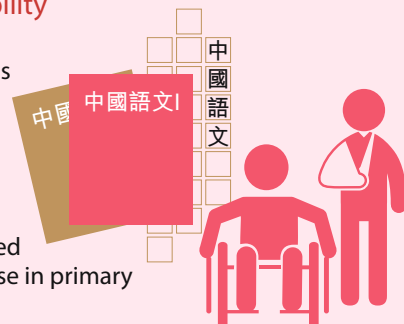


## Special Needs Groups Task Force

Enhance upward mobility of ethnic minorities

- Monitored the progress and effectiveness in implementing the “Chinese Language Curriculum Second Language Learning Framework” and Applied Learning Chinese Course in primary and secondary schools



- Conducted thematic study on poverty situation of ethnic minorities

Promote employment of persons with disabilities

- Conducted research on the poverty situation of persons with disabilities with a report released on 31 December 2014

- Organised three focus group meetings and three visits. Key recommendations include:

- Providing one-stop service to assist persons with disabilities in securing open employment
- Reviewing the Comprehensive Social Security Assistance system for providing incentives to persons with disabilities to take up open employment
- Providing support for carers for persons with disabilities

Strengthen early childhood education services

- Reviewed the fee remission mechanism to provide support for pre-school children from families with financial needs
- Recommended to increase the number of whole-day kindergarten places



Support students with special education needs

- Improving the “early identification” and “early support” mechanisms
- Strengthening support for students with special education needs who are studying in ordinary schools
- Increasing support for parents

## Youth Education, Employment and Training Task Force



Policy reviews

- Strengthening the development of and promotional efforts for vocational education
- Enhancing the Pilot Training & Support Scheme with reference to overseas experience
- Following up on the Report of the Committee on Free Kindergarten Education

Research studies

- Examining the earning mobility of post-secondary graduates from underprivileged backgrounds in different generations

“Life Buddies” Mentorship Programme

- Organised a territory-wide career-based mentorship programme involving different sectors, to enhance public awareness of and participation in mentorship programmes, as well as to promote the development of such programmes



“Future Stars” Programme

- Continued to implement the “Future Stars” Programme. More than 300 organisations and 8 000 young people participated in the Programme in 2015



\* Please refer to the programme booklet for details.

## Social Innovation and Entrepreneurship Development Fund Task Force

Engaged the first batch of four intermediaries to take forward the Capacity Building and Innovative Programmes in the second quarter of 2015

- The intermediaries are the Hong Kong Council of Social Service, PolyU Technology and Consultancy Company Limited, SOW (Asia) Foundation Limited, and the Yeh Family Philanthropy Limited
- As at end September 2015:
  - Capacity Building Projects: attracted nearly 600 participants
  - Innovative Programmes: nearly \$3.3 million approved

Organised the “Shared Value: Creating Competitive Advantage” Forum (September 2015)

- Encouraging business leaders to help create shared values so as to provide business opportunities and deliver social impact at the same time (over 160 participants attended)

Set up an information sharing platform for local food assistance services

- Invitation for proposals to be intermediary of the project started in May 2015 and the project will be implemented in early 2016

Jointly organised the Social Innovative Video Competition with the Government’s Youth Portal (Youth.gov.hk)

- 70 entries from over 50 secondary schools received

Organised the roving exhibition “Social Innovation Jam”

- Presenting the concerns and innovative ideas of secondary school students on social issues, as well as the concept of social innovation and overseas examples to the general public. Attracted nearly 30 000 visitors.



## Community Care Fund Task Force

Since the establishment of the Community Care Fund in 2011:

- 30 assistance programmes launched
- Total commitment of over \$6.1 billion approved
- More than 1 130 000 people benefitted
- 11 assistance programmes regularised, involving annual recurrent expenditure of around \$720 million



\* Please refer to the programme booklet for details.

## Next Steps

- Launch the public consultation exercise on retirement protection in December 2015
- Continue to monitor the progress of the Low-income Working Family Allowance Scheme to ensure its timely implementation in the second quarter of 2016
- Update the poverty line analysis annually to keep in view the poverty situation in Hong Kong and the effectiveness of the poverty alleviation policies
- Further the work of the Community Care Fund and the Social Innovation and Entrepreneurship Development Fund



## Membership

Chairperson

Chief Secretary for Administration

Non-official Members

Ms Amy Chan Lim-chee  
Ms Sylvia Chan May-kuen  
Ms May Chan Suk-mei  
Mr Clement Chen Cheng-jen  
Dr Henry Cheng Kar-shun  
Mr Cheung Kwok-che  
Professor Stephen Cheung Yan-leung  
Mr Chua Hoi-wai  
Dr Stephen Frederick Fisher  
Mr Frederick Fung Kin-kee  
Mr Ho Hei-wah  
Ms Lam Shuk-yee  
Mr Lau Ming-wai  
Dr Law Chi-kwong  
Mr Leung Che-cheung  
Mr Clarence Leung Wang-ching  
Ms Li Fung-ying  
Professor Francis Lui Ting-ming  
Ms Yvonne Sin  
Mr Michael Tien Puk-sun

Ex-officio Members

Secretary for Labour and Welfare (or his representative)  
Secretary for Education (or his representative)  
Secretary for Food and Health (or his representative)  
Secretary for Home Affairs (or his representative)

## Contact Us

If you have any enquiries or comments on the work of the CoP, please feel free to contact us via the following channels:

Address: 26/F, Central Government Offices,  
2 Tim Mei Avenue, Tamar,  
Hong Kong

Telephone: 3142 2888

Fax: 2537 7068

Website: [www.povertyrelief.gov.hk](http://www.povertyrelief.gov.hk)

Email: [opinion@povertyrelief.gov.hk](mailto:opinion@povertyrelief.gov.hk)



# Commission on Poverty Progress Report

## 2015

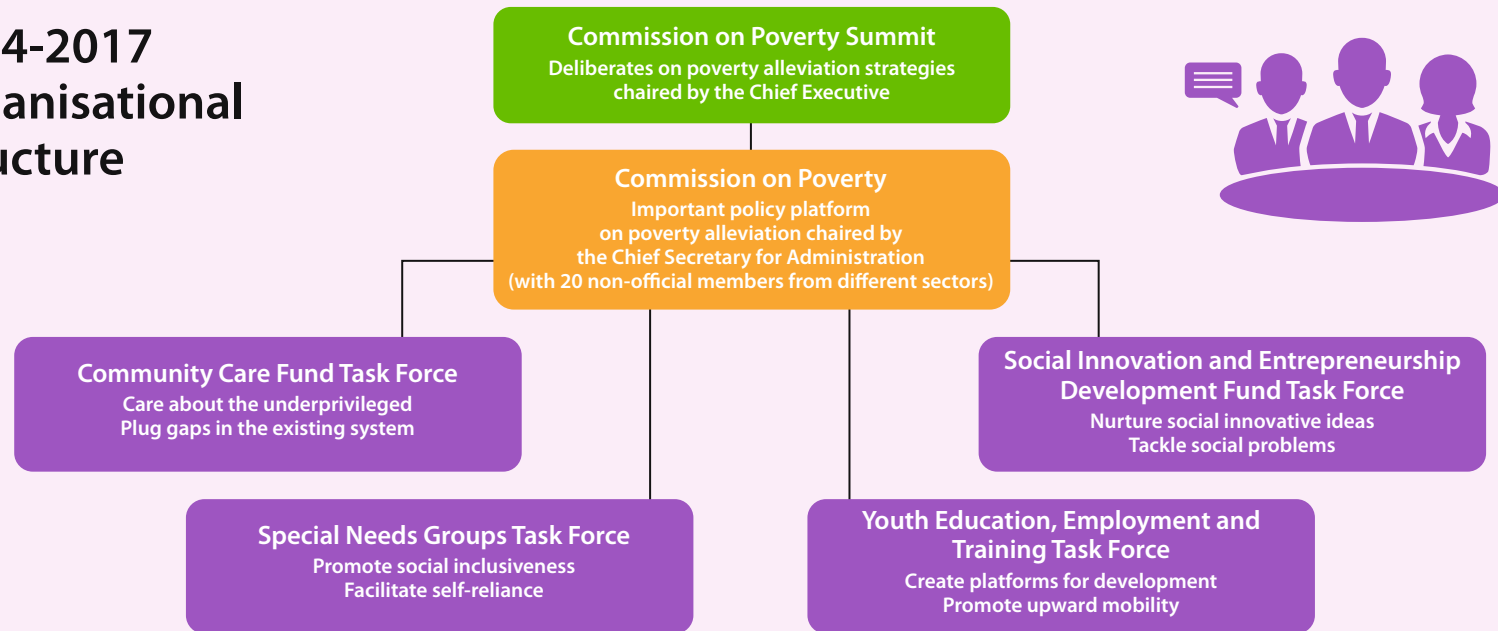
“...Encouraging young people and adults to become self-reliant through employment, while putting in place a reasonable and sustainable social security and welfare system to help those who cannot provide for themselves...”

— 2014 Policy Address

# Poverty alleviation tops the Government's agenda

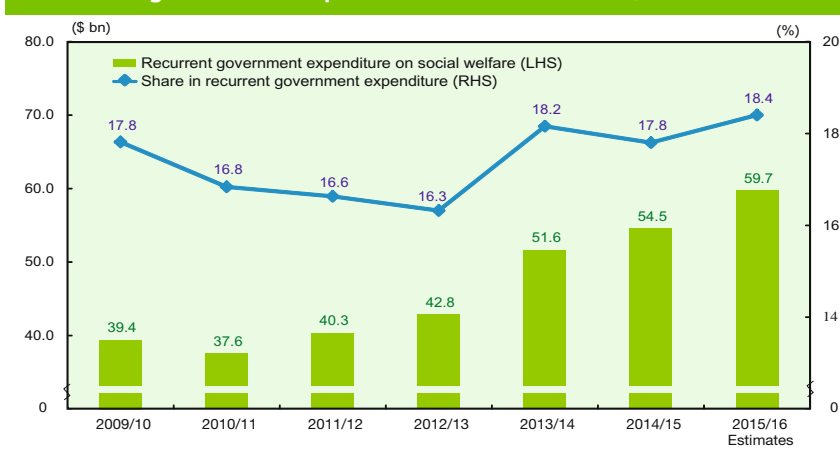


# 2014-2017 Organisational Structure



# Continuous growth of government resources on poverty alleviation

Recurrent government expenditure on social welfare, 2009/10-2015/16

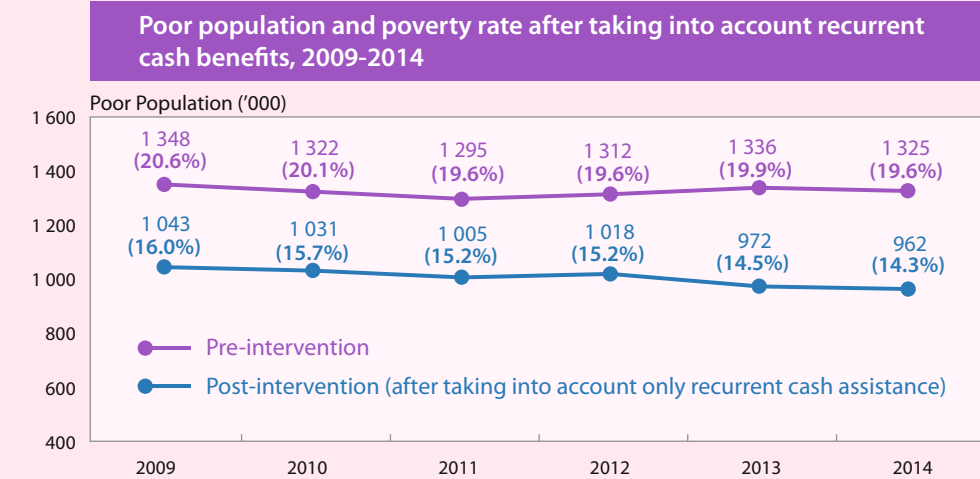


Note: Figures for 2013/14 and before are actual figures, while those for 2014/15 are revised estimates. Source: Financial Services and the Treasury Bureau.

# Progress Report — Commission on Poverty

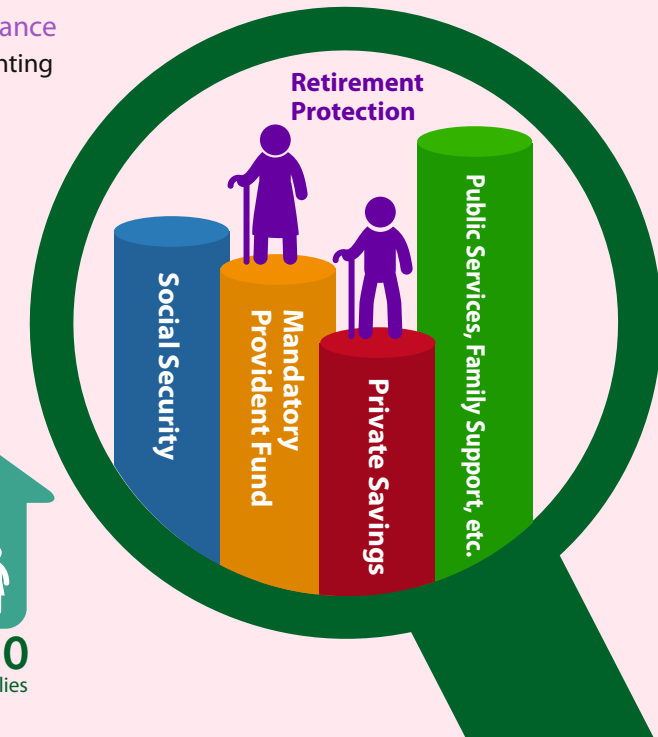
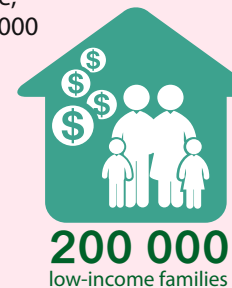
## Poverty Line

- Continued to monitor the poverty situation over time through updating the poverty line



## Low-income Working Family Allowance

- Monitored the progress in implementing the Low-income Working Family Allowance Scheme, which
  - will be introduced in the second quarter of 2016
  - will incur government expenditure of some \$3.1 billion every year
  - will benefit more than 200 000 low-income families with 710 000 people, including 170 000 children and young people



Poverty figures at record-low in the past 6 years

2014  
**962 100**  
Poor Population

Poverty Rate  
**14.3%**

## Retirement Protection

- With reference to the Research Report on Future Development of Retirement Protection in Hong Kong, reviewed the multi-pillar system in Hong Kong, and considered how to provide better old age protection for the needy elderly
- Made preparations for the public consultation exercise to be launched in December 2015