

Milestones of CoP's Work

- 12/2012**
The reinstated CoP commenced its first term
- 4/2013**
Implementation of Old Age Living Allowance, benefiting more than 430 000 elderly persons
- 9/2013 CoP Summit**
 - Publication of the first official poverty line
 - Launch of the "Future Stars" Programme, SIE Fund and Talent-Wise Employment Charter
- 1/2014 Announcement of the poverty alleviation blueprint (2014 Policy Address)**
 - Planning for the implementation of LIFA
 - Strengthening support for persons with disabilities, ethnic minorities and students with special educational needs, etc.
 - Incorporating seven CCF programmes proved to be effective in poverty alleviation into the Government's regular assistance programmes
- 11/2014**
Publication of the poverty situation for 2013
- 1/2015**
Funding approval for LIFA granted by the Legislative Council
- 1/2015**
\$50 billion earmarked for retirement protection to provide for future needs (2015 Policy Address)
- 10/2015 CoP Summit**
 - Publication of the poverty situation for 2014
 - Launch of "Life Buddies" Mentorship Programme
- 4/2016**
CoP reviewed the poverty line analytical framework
- 5/2016**
Launch of LIFA
- 5/2016**
SIE Fund announced the first batch of ventures funded under its Innovative Programmes
- 5/2016**
Publication of research findings on the earnings mobility of post-secondary graduates from underprivileged backgrounds in different generations
- 10/2016 CoP Summit**
 - Publication of the poverty situation for 2015

First-term CoP (15 meetings) and 6 Task Forces (37 meetings)

- 1/2013**
Enhancement of Work Incentive Transport Subsidy, benefiting over 100 000 low-income earners
- 6/2013**
Injection of \$15 billion into the CCF
- 2/2014**
Launch of "Bless Hong Kong", a community engagement campaign
- 8/2014**
Publication of the Research Report on Future Development of Retirement Protection in Hong Kong by the research team led by Professor Nelson Chow

Second-term CoP (20 meetings) and 4 Task Forces (30 meetings)

- 12/2014**
Commencement of the second-term CoP
- 12/2014**
Publication of the Poverty Situation Report on Disability
- 3/2015**
SIE Fund engaged the first batch of intermediaries
- 11/2015**
Launch of the Pilot Scheme on On-site Pre-school Rehabilitation Services through cross-bureau collaboration
- 12/2015**
Launch of the "Retirement Protection Forging Ahead" public engagement exercise
- 12/2015**
Publication of the Poverty Situation Report on Ethnic Minorities
- 6/2016**
SIE Fund engaged an intermediary to launch the Food Support Flagship Project
- 6/2016**
Completion of the "Retirement Protection Forging Ahead" public engagement exercise
- 8/2016**
The CoP endorsed six new CCF programmes in 2016, including the Dementia Community Support Scheme endorsed in August

Social Innovation and Entrepreneurship Development Fund (SIE Fund) Task Force

Funding Innovative Programmes and promoting Capacity Building through intermediaries

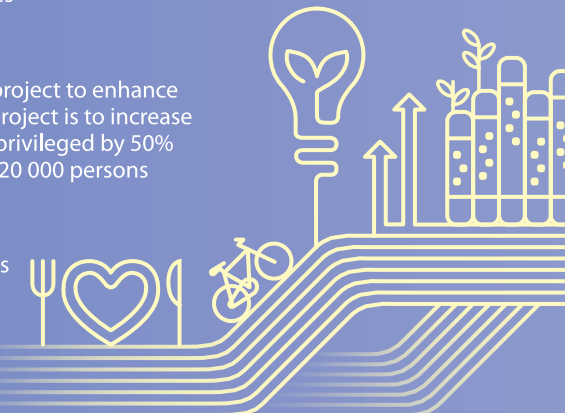
- Approved 38 ventures, involving a funding of over \$12 million and benefiting more than 25 000 people
- Over 1 200 people participated in various Capacity Building programmes

Implementing the Food Support Flagship Project

- An information-sharing platform will be developed under the flagship project to enhance the efficiency of food support service in Hong Kong. The target of the project is to increase by end-2019 the total number of hot and packaged meals to the underprivileged by 50% to over 50 000 per day, and the number of beneficiaries by 30% to over 20 000 persons

Enhancement of public awareness of social innovation

- Promoting the concept of "Shared Value", encouraging the local business sector to adopt the new business model of "Creating Shared Value" to solve specific social problems while gaining profit
- Organised the SI (Social Innovation) CEO Competition to encourage undergraduates to explore innovative ways to tackle social problems



Community Care Fund Task Force

Since the establishment of the CCF in 2011:

- 36 assistance programmes have been approved
- a total commitment of around \$7.2 billion has been made
- more than 1.41 million people have been benefited
- 11 assistance programmes have been incorporated into the Government's regular programmes, involving an annual recurrent expenditure of around \$700 million

* For details, please refer to the CCF booklet

1.41 million people benefited

A total commitment of around \$7.2 billion

Next Steps

- Submit the consultation report of the "Retirement Protection Forging Ahead" public engagement exercise to the Government
- Continue to monitor the poverty situation and gauge the effectiveness of various poverty alleviation policies
- Continue to drive the work of the CCF and the SIE Fund

NEXT

Contact Us

Address: 26/F, Central Government Offices, 2 Tim Mei Avenue, Tamar, Hong Kong
 Telephone: 3142 2888
 Fax: 2537 7068
 Email: opinion@povertyrelief.gov.hk
 Website: <http://www.povertyrelief.gov.hk>
 Facebook: CoPcares



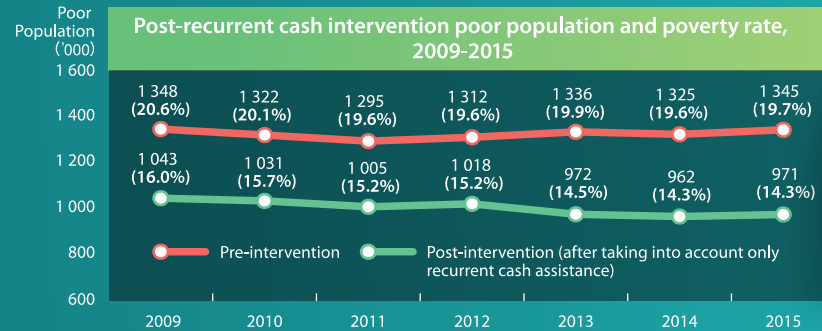
Commission on Poverty Progress Report 2016



Major Functions of the Commission on Poverty (CoP) in the Past Year

Monitoring the poverty situation

- Continued to monitor the poverty situation through updating the poverty line annually
- As at end-August 2016, overall Comprehensive Social Security Assistance caseload declined for 65 consecutive months. Number of unemployment cases and low-earnings cases dropped for 84 and 90 consecutive months to 15 075 and 5 634 respectively



Poor population stayed below 1 million for the third consecutive year

Poverty Rate
14.3%

2015
971 400
Poor Population

Recurrent cash benefits lifted
370 000 persons out of poverty and reduced the poverty rate by 5.4 percentage points

Low-income Working Family Allowance

- Monitored the implementation of the Low-income Working Family Allowance (LIFA) Scheme since May 2016
- Amongst over 32 000 applications received, more than 24 000 approved, involving payment of around \$290 million for over 90 000 people
- LIFA's poverty alleviation impact to be incorporated in the poverty situation for 2016



Retirement protection

- Carried out the 6-month "Retirement Protection Forging Ahead" public engagement exercise
- Organised or attended 110 different public engagement activities
- About 18 000 submissions received. Independent consultant is consolidating views collected and will compile a consultation report to the CoP for further consideration by the end of this year



2014-2017 CoP's Structure



Youth Education, Employment and Training Task force

Review of policies relating to youth education and development

- Strengthening the development and promotion of vocational education
- Monitoring the progress of the implementation of life planning education in secondary schools
- Supported the implementation of Free Quality Kindergarten Education



Thematic study

- Published research findings on the earnings mobility of post-secondary graduates from underprivileged backgrounds and explored measures to promote youth upward mobility



"Life Buddies" Mentoring Scheme

- Launched the "Life Buddies" Mentoring Scheme with the support of more than 70 government departments and private organisations, benefiting about 2 000 students



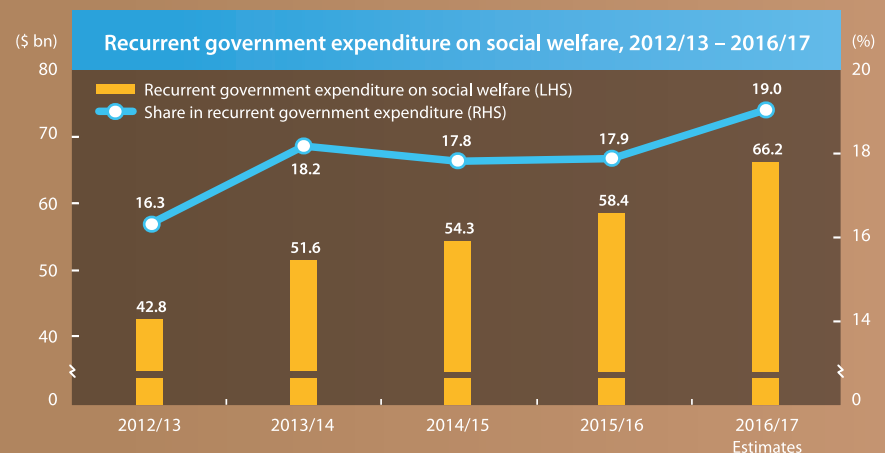
"Future Stars" Programme

- Implemented the Programme for the third year. In 2016, over 350 organisations participated in or offered sponsorship to the Programme, benefiting about 10 000 young people



Continuous Increase in Resources for Poverty Alleviation

The Government's recurrent expenditure on social welfare in 2016/17 is estimated to be \$66.2 billion, representing a significant increase of 55% as compared with that of 2012/13



Special Needs Groups Task force

Facilitating ethnic minorities to integrate into the community

- Monitored the progress and effectiveness of implementing the Chinese Language Curriculum Second Language Learning Framework and Applied Learning Chinese Course in primary and secondary schools
- Released findings of the thematic study on poverty situation of ethnic minorities
- Established a working group to follow up measures for helping ethnic minorities integrate into the community
- Agreed to launch a study on the use of public services by ethnic minorities



Support for persons with disabilities

- Improved the medical assessment arrangement for the Disability Allowance
- Introduced three pilot schemes through the Community Care Fund (CCF) to encourage persons with disabilities to work and support their carers
- Supported the Civil Service Bureau to launch a pilot scheme in the summer of 2016 to offer post-secondary students with disabilities internship opportunities in various government bureaux and departments



Support for students with special educational needs

- Supported the introduction of the Pilot Scheme on On-site Pre-school Rehabilitation Services to provide inter-disciplinary services for pre-school children with special needs
- Monitored the implementation of a CCF pilot project which provides ordinary schools with funding to engage special educational needs co-ordinators



Support for new arrivals and single parents

- Organised focus group meetings, collected views of stakeholders and explored support measures

